

ARE YOU READY FOR THE TRACTION LAW?

Do you have a 4WD or AWD vehicle?

YES

Is your tire tread depth at least 3/16"?

YES

YOU'RE PREPARED!
You meet the Traction Law requirements!

NO

Do you have tire chains or an AutoSock?

YES

YOU MEET THE TRACTION LAW REQUIREMENTS!
Consider investing in new tires with more than 3/16" tread depth.

NO

UH OH!
Your vehicle is good, but you'll need to invest in new tires with at least 3/16" tread or tire chains to meet the Traction Law requirements.

Do you have snow tires or tires with a mud/snow (M/S) designation?



M+S

YES

Is your tire tread depth at least 3/16"?

YES

YOU'RE PREPARED!
You meet the Traction Law requirements!

NO

YOUR TIRE TREAD IS TOO SHALLOW.
Your tires won't perform well in winter conditions. You'll need to invest in tires with better tread depth.

NO

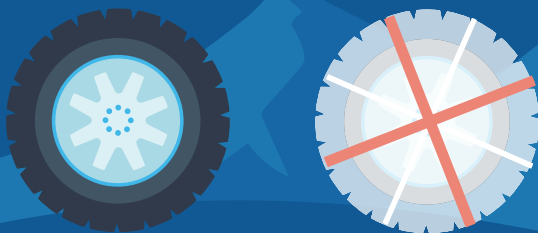
Do you have tire chains or an AutoSock?

YES

YOU MEET THE TRACTION LAW REQUIREMENTS!
Consider investing in new tires with more than 3/16" tread depth.

NO

YOU DO NOT MEET THE TRACTION LAW REQUIREMENTS.
Invest in new tires or a traction control device like tire chains or an AutoSock to meet Traction Law requirements.



If you don't meet the Traction Law requirements and you cause a crash, you'll be subject to a **\$132 citation**. The fine jumps to **\$656** if the Traction Law violation results in the closure of traffic lanes.