

Colorado Travel Impacts *1996-2016p*



Image Credit: Matt Inden/Miles

June 2017

Prepared for the

Colorado Tourism Office
Denver, Colorado

**THE ECONOMIC IMPACT
OF TRAVEL ON COLORADO
1996-2016P**

June 2017

prepared for the

Colorado Tourism Office
Office of Economic Development and International Trade
Denver, Colorado

Dean Runyan Associates
833 SW Eleventh Avenue, Suite 920
Portland, OR 97205
503/226-2973
www.deanrunyan.com

PREFACE

The purpose of this study is to document the economic significance of the travel industry in Colorado from 1996 to 2016. These findings show the level of travel spending by overnight international and domestic visitors traveling to and through the state and the impact this spending had on the economy in terms of earnings, employment and tax revenue.

This study was prepared for the Colorado Tourism Office by Dean Runyan Associates. Dean Runyan Associates has specialized in research and planning services for the travel, tourism and recreation industry since 1984. With respect to economic impact analysis, the firm developed and currently maintains the Regional Travel Impact Model (RTIM), a proprietary computer model for analyzing travel economic impacts at the state, regional and local level. Dean Runyan Associates also has extensive experience in project feasibility analysis, market evaluation, survey research and travel and tourism planning.

Special thanks are due to the staff at the Colorado Tourism Office for their valuable support and assistance.

Dean Runyan Associates
833 SW 11th Ave., Suite 920
Portland, OR 97205
(503) 226-2973
www.deanrunyan.com

TABLE OF CONTENTS

	page
List of Tables and Figures	i
Executive Summary	iii
I. National Travel Trends	1
II. Colorado Travel Impacts	5
III. Regional Overnight Visitor Impacts	13
IV. District Overnight Visitor Impacts	21
V. County Overnight Visitor Impacts	35
Appendices	
A. Regional Travel Impact Model	54
B. Definition of Terms	59
C. NAICS Industries	61

LIST OF TABLES AND FIGURES

	page
<hr/>	
National Travel Trends	
Annual Direct Travel Spending in U.S., 2000-2016p	2
Spending by Foreign and Resident Travelers in U.S.	2
Foreign Share of U.S. Internal Travel Spending	3
Overseas Arrivals (Millions)	3
Relative Value of Selected Foreign Currencies compared to U.S. Dollar	3
U.S. Travel Industry Employment	4
Components of U.S. Travel Industry Employment	4
State Travel Impacts	
Colorado Travel Trends, 1996-2016p	7
Colorado Travel Industry Employment, 1996-2016p	8
Colorado Visitor Spending adjusted for Inflation, 2000-2016p	8
Taxable Sales of Lodging Establishments, 1996-2016p	9
Domestic Visitors to Colorado by Air Transportation, 2000-2016	9
Travel-Generated Local and State Tax Receipts, 2016p	10
Colorado Travel Impacts, 2006-2016p	11
Regional Overnight Visitor Impacts	
Colorado Regions (counties included)	14
Overnight Visitor-Generated Earnings by Region, 2016p	14
Overnight Visitor-Generated Earnings as a % of Total Earnings, 2016p	15
Denver Metro Overnight Visitor Impacts, 2006-2016p	16
Mountain Resort Overnight Visitor Impacts, 2006-2016p	17
Pikes Peak Overnight Visitor Impacts, 2006-2016p	18
Other Colorado Overnight Visitor Impacts, 2006-2016p	19
Regional Overnight Visitor Impacts, 2016p	20
District Overnight Visitor Impacts	
Colorado Districts (counties included)	22
Overnight Visitor-Generated Earnings by District, 2016p	23
Overnight Visitor-Generated Earnings as a % of Total Earnings, 2016p	23
Northwest District Overnight Visitor Impacts, 2006-2016p	24
Mesa District Overnight Visitor Impacts, 2006-2016p	25
Southwest District Overnight Visitor Impacts, 2006-2016p	26
North Central District Overnight Visitor Impacts, 2006-2016p	27
Central District Overnight Visitor Impacts, 2006-2016p	28
South Central District Overnight Visitor Impacts, 2006-2016p	29
Larimer District Overnight Visitor Impacts, 2006-2016p	30
Denver District Overnight Visitor Impacts, 2006-2016p	31
El Paso/Teller District Overnight Visitor Impacts, 2006-2016p	32
Northeast District Overnight Visitor Impacts, 2006-2016p	33
Southeast District Overnight Visitor Impacts, 2006-2016p	34

LIST OF TABLES AND FIGURES (CONTINUED)

El Paso through Garfield, 2002-2016p	41
Gilpin through Hinsdale, 2002-2016p	42
Huerfano through Kiowa, 2002-2016p	43
Kit Carson through Larimer, 2002-2016p	44
Las Animas through Mesa, 2002-2016p	45
Mineral through Montrose, 2002-2016p	46
Morgan through Park, 2002-2016p	47
Phillips through Pueblo, 2002-2016p	48
Rio Blanco through Saguache, 2002-2016p	49
San Juan through Summit, 2002-2016p	50
Teller through Yuma, 2002-2016p	51

This page intentionally blank

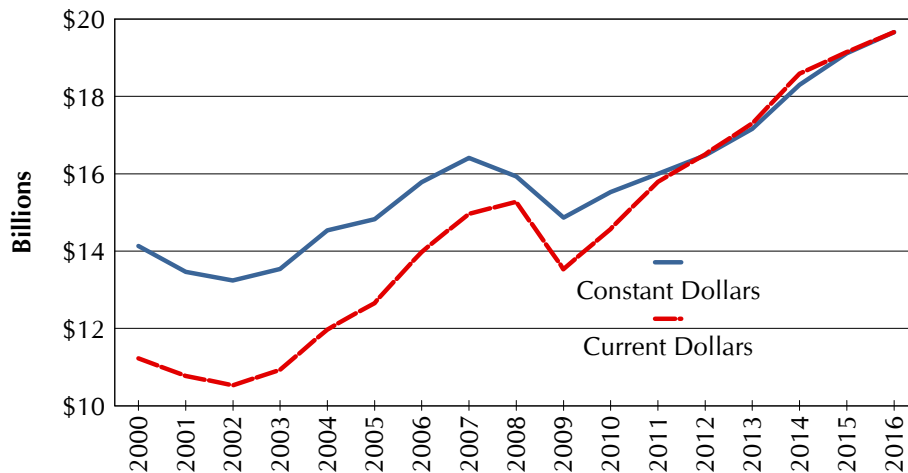
EXECUTIVE SUMMARY

This report describes the economic impacts of travel to and through Colorado and each of its sixty-four counties, four tourism regions, and eleven districts. The estimates of the direct impacts associated with traveler spending in Colorado were produced using the Regional Travel Impact Model (RTIM) developed by Dean Runyan Associates.

Recent Travel Trends in the Colorado Travel Industry

- Total direct travel spending in Colorado during 2016 was over **\$19.7 billion** - direct travel spending directly supported over **165,000 jobs** and **earnings of over \$5.8 billion**.
- The Colorado travel industry experienced a 2.7 percent increase in travel spending from 2015 in current dollars. Since 2009, travel spending in real (inflation-adjusted) dollars has increased by 4.1 percent per year.

Colorado Travel Spending Adjusted for Inflation, 2000-2016p

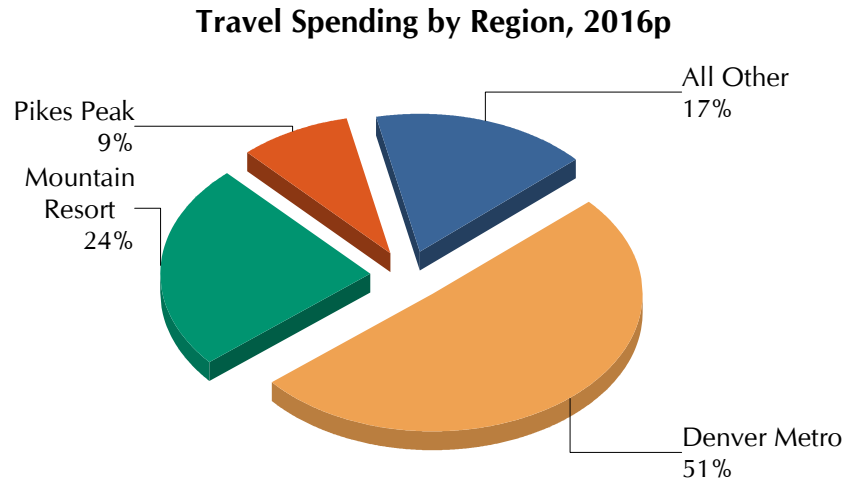


Source: Dean Runyan Associates, Bureau of Labor Statistics and Rocky Mountain Lodging Report.

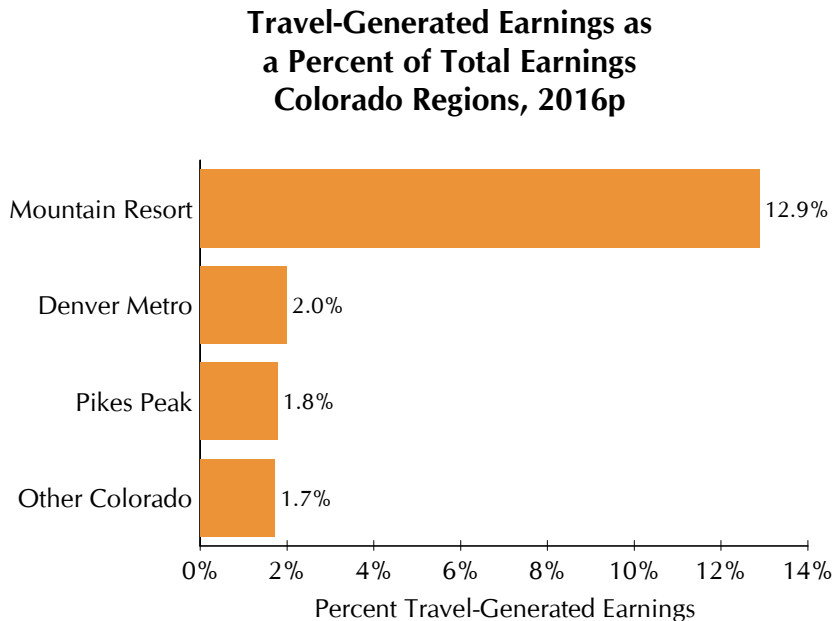
- Air travel to Colorado destinations on domestic flights was up 7.6 percent from the preceding year.
- The Colorado travel industry generated **\$1.2 billion in local and state tax revenues** in the 2016 calendar year – this represents approximately **\$560 of tax revenue per household** in the state.

THE TRAVEL INDUSTRY BENEFITS ALL REGIONS OF COLORADO

While travel and tourism is important throughout the state, about half (51%) of all overnight travel spending occurs in the Denver Metro Region.



Source: Dean Runyan Associates, U.S. Bureau of Labor Statistics and U.S. Bureau of Economic Analysis.



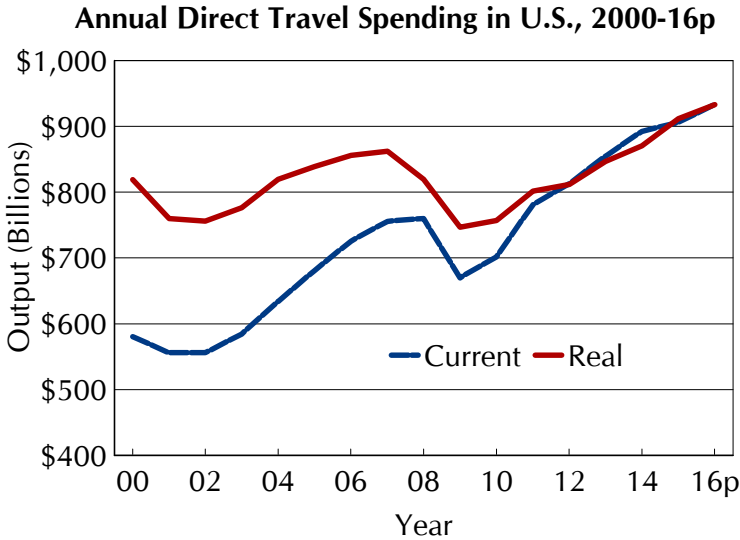
Source: Dean Runyan Associates, U.S. Bureau of Labor Statistics and U.S. Bureau of Economic Analysis.

I. NATIONAL TRAVEL TRENDS

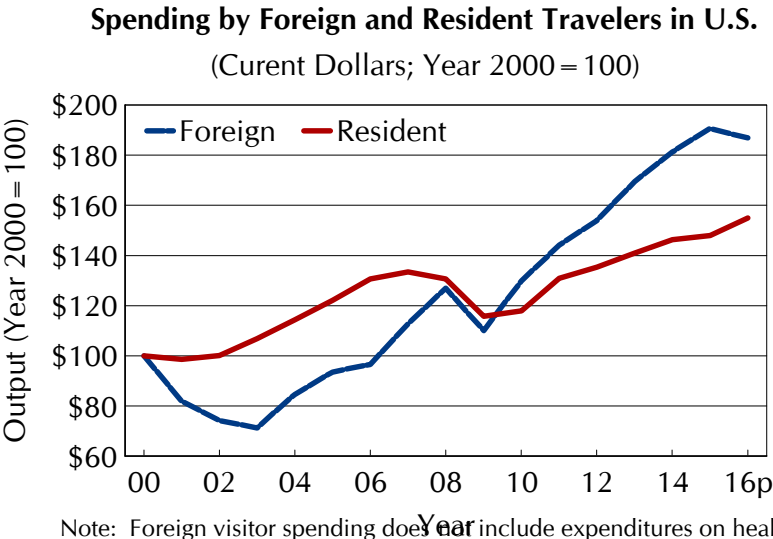


The national level data in this section focuses on visitor spending trends in current and real dollars, resident and foreign visitor spending in the U.S., and trends in travel-generated employment.

The following two graphs are derived from the Bureau of Economic Analysis Travel and Tourism Satellite Accounts*. Both graphs show direct tourism output for the United States - spending by resident and foreign visitors. The 2016 values are based on the first three quarters of the year.



Spending by resident and foreign visitors was \$938 billion in 2016 in current dollars. This represents a 3.0 percent increase over 2015. When adjusted for changes in prices (real dollars), spending increased by 2.3 percent from 2015 to 2016 - compared to a 4.7 percent increase for the preceding year.



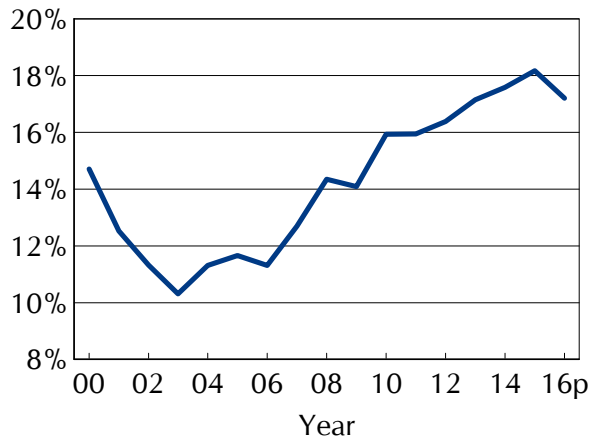
Note: Foreign visitor spending does not include expenditures on health and educational services or expenditures by short term seasonal workers.

The bottom chart compares the change in current dollar spending by resident and foreign visitors since 2000. In 2016, the increase in spending by resident visitors (4.7 percent) compares to a 2.0 percent decrease in non-resident spending. Visitor spending by non-residents increased by 5.2 percent from 2014 to 2015.

*See <http://www.bea.gov/industry/index.htm#satellite>.

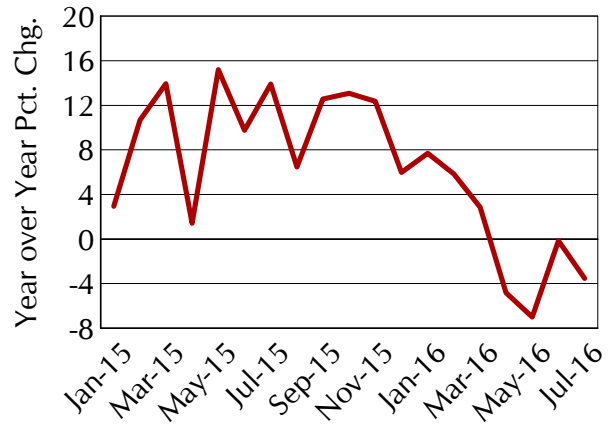
The foreign share of U.S. internal travel declined by almost a full percent point from 2015 to 2016 (18.2 percent to 17.2 percent). This has been due to two factors. First, overseas arrivals began to show a decreasing rate of growth in the beginning of 2016 and actually declined in absolute numbers in the most recently reported months. Secondly, the value of foreign currencies has fall relative to the U.S. dollar. This not only discourages travel to the U.S., but also means that foreigners that do travel to the U.S. have less money to spend on goods and services.

Foreign Share of U.S. Internal Travel Spending



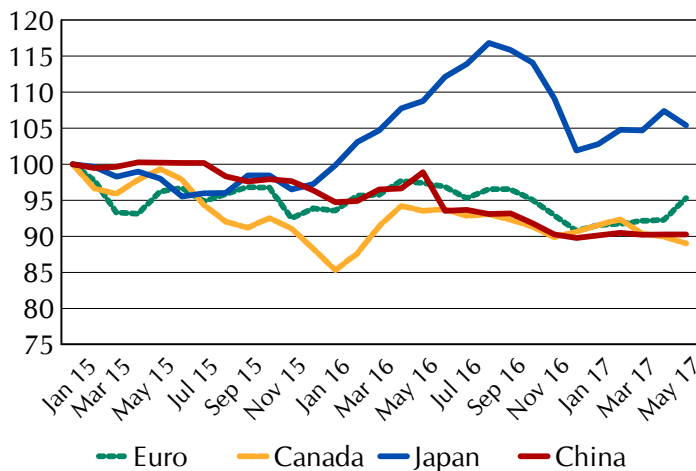
Note: Internal travel does not include spending on international airfares to U.S carriers.

Overseas Arrivals
(Year over Year Percent Change)



Relative Value of Selected Foreign Currencies compared to U.S. Dollar

Monthly Averages, Jan 2015 through May 2017



Sources:

Foreign Share of U.S Internal Travel: Bureau of Economic Analysis Travel & Tourism Satellite Accounts and International Transactions.

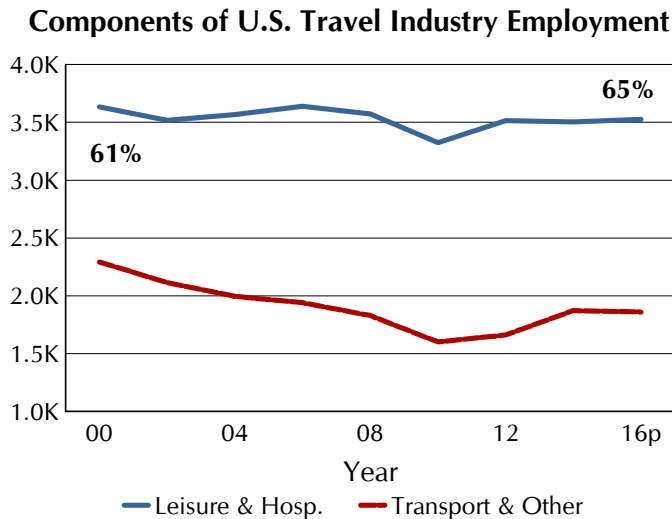
Overseas Arrivals: Office of Travel and Tourism Industries, U.S. Department of Commerce.

Relative Value of Selected Foreign Currencies: USForex, Inc. (www.usforex.com)

The following two graphs show employment trends since 2000 and the composition of travel industry employment since the recession. The first graph shows that travel-generated employment recovered from the 2008-09 recession by 2013. Since then, however, there has been no significant employment growth in the industry. Leisure and hospitality employment was 3.5 million in 2016 or 65 percent of total travel industry employment, compared to 3.6 million in 2000 or 61 percent of the total. Most of this growth was due to food services employment. However, employment in transportation and other industries declined over the same period from 2.3 million to 1.8 million, mostly due to decreased employment in the airline and related transportation industries.



Source: Bureau of Economic Analysis Travel & Tourism Satellite Accounts.



Source: Bureau of Economic Analysis Travel & Tourism Satellite Accounts. Leisure & hospitality includes accommodations, food services, and arts, entertainment & recreation. Transportation and other includes retail and all other industries.

II. COLORADO TRAVEL IMPACTS 1996-2016p



The Scope of the Colorado Travel Industry

The multi-billion dollar travel industry in Colorado is an important part of the state and local economies. The industry is represented primarily by businesses in the leisure and hospitality sector, transportation, and retail. The money that visitors spend on various goods and services while in Colorado produces business receipts at these firms, which in turn generate earnings and employment for Colorado residents. In addition, state and local governments collect taxes that are generated from visitor spending. Most of these taxes are imposed on the sale of a goods and services to visitors, thus avoiding a tax burden on local residents.

The focus of this report is on the ***overnight (both domestic and international) and day visitor*** components of the Colorado travel industry from 1996 through 2016p. On the following pages are detailed travel spending, employment and earnings estimates, and tax receipts directly generated by overnight and day visitors to and through Colorado. Following this section, detailed travel impact estimates of *overnight* visitors for regions, districts and counties constitute the remainder of this report (impacts of day visitors available only at the state level).

Direct Impacts of Travel in Colorado: A Summary

- Total direct travel spending in Colorado was approximately \$19.7 billion during 2016p.
- Visitors that stayed overnight in commercial lodging (hotels, motels, rented condos, bed & breakfasts) accounted for about two-thirds (66%) of all visitor spending.
- Lodging expenses (including campgrounds) accounted for 24 percent of all spending by visitors to Colorado. Motor fuel and ground transportation accounted for 11 percent, and food & beverage services accounted for 23 percent of all visitor spending.
- Direct travel spending in Colorado generated over 165,000 jobs with earnings of \$5.8 billion in 2016p.
- Direct travel spending generated \$1.2 billion in local and state taxes (not including property taxes).
- Since 1996, visitor-generated spending has increased at an average annual rate of 4.0 percent, earnings by 3.7 percent, and local and state tax revenues by 5.6 percent and 3.3 percent, respectively.

Colorado Direct Travel Impacts, 1996-2016p

	Spending (\$Billion)	Earnings (\$Billion)	Employment (Thousand)	Tax Receipts (\$Million)		
				Local	State	Total
1996	\$8.9	\$2.8	139.7	\$243	\$258	\$502
1997	\$9.5	\$2.9	139.3	\$264	\$275	\$540
1998	\$10.1	\$3.1	141.5	\$278	\$293	\$570
1999	\$10.6	\$3.1	140.6	\$288	\$295	\$584
2000	\$11.2	\$3.3	140.2	\$310	\$303	\$614
2001	\$10.8	\$3.4	131.2	\$301	\$288	\$589
2002	\$10.5	\$3.3	128.2	\$305	\$283	\$588
2003	\$10.9	\$3.3	128.2	\$310	\$289	\$599
2004	\$12.0	\$3.5	136.3	\$338	\$316	\$653
2005	\$12.7	\$3.6	137.5	\$373	\$327	\$700
2006	\$14.0	\$3.9	142.6	\$420	\$360	\$780
2007	\$15.0	\$4.1	147.0	\$462	\$383	\$844
2008	\$15.3	\$4.2	148.2	\$471	\$381	\$852
2009	\$13.5	\$4.0	140.1	\$430	\$350	\$780
2010	\$14.6	\$4.0	138.4	\$460	\$366	\$826
2011	\$15.8	\$4.1	141.1	\$495	\$382	\$877
2012	\$16.5	\$4.4	145.1	\$521	\$397	\$918
2013	\$17.3	\$4.7	150.4	\$556	\$418	\$974
2014	\$18.6	\$5.0	155.4	\$615	\$446	\$1,061
2015	\$19.1	\$5.5	160.6	\$663	\$470	\$1,133
2016p	\$19.7	\$5.8	165.4	\$725	\$491	\$1,215
<i>Annual Percent Change</i>						
15-16p	2.7%	6.9%	3.0%	9.3%	4.4%	7.3%
96-16p	4.0%	3.7%	0.8%	5.6%	3.3%	4.5%

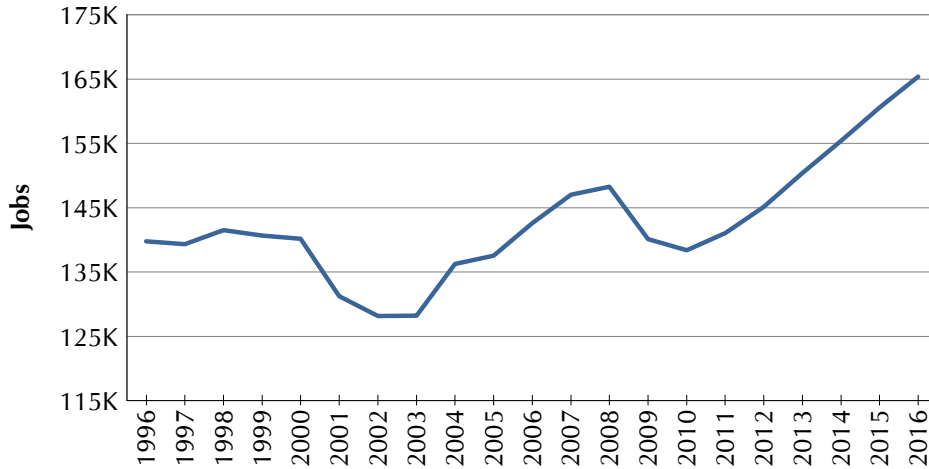
Earnings include payroll, other earned income and proprietor income. Employment includes payroll employees and proprietors.

Annual Percentage Change for 1996-2016p is the average annual percentage change.

COLORADO TRAVEL TRENDS

The first graph, below, shows the trend in travel industry employment from 1996-2016p.

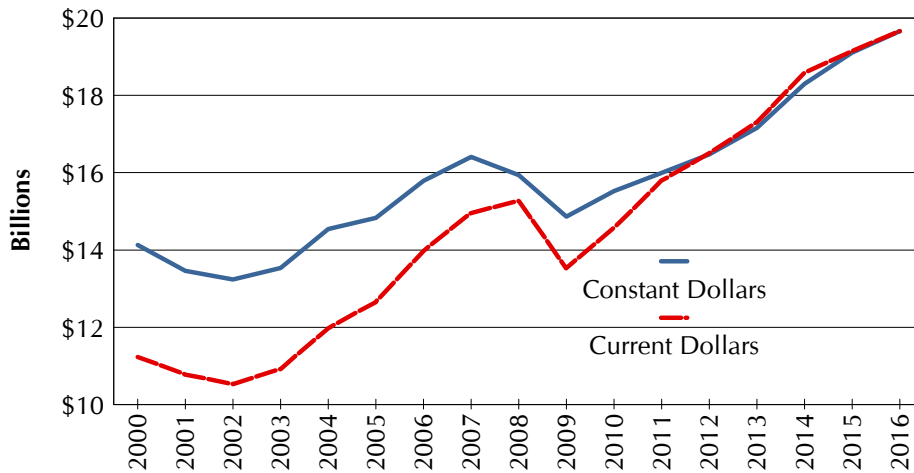
Colorado Travel Industry Employment, 1996-2016p



Source: Dean Runyan Associates, Inc.

Other indicators of visitor travel trends to Colorado are also shown. These include travel spending adjusted for inflation, taxable sales for lodging establishments and domestic air visitors to Colorado.

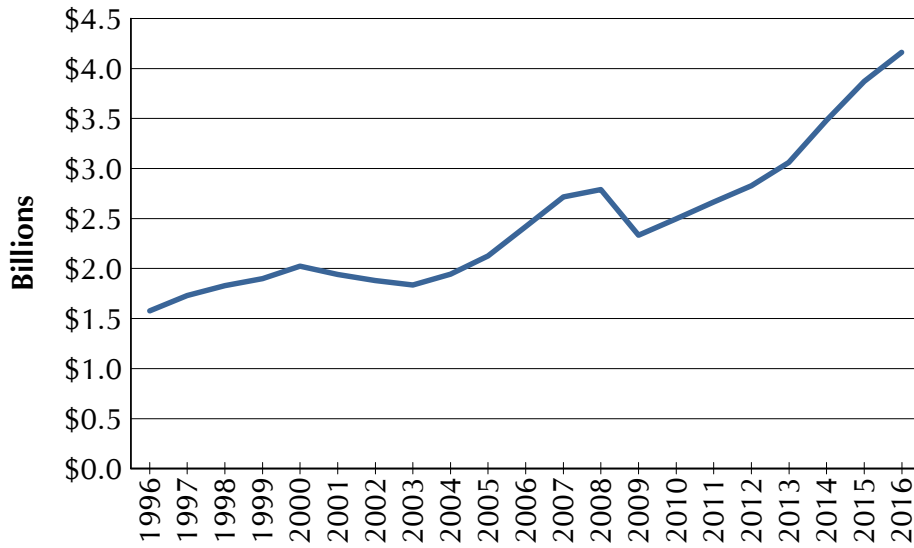
Colorado Visitor Spending Adjusted for Inflation, 2000-2016p



Source: Dean Runyan Associates, Bureau of Labor Statistics and Rocky Mountain Lodging Report.

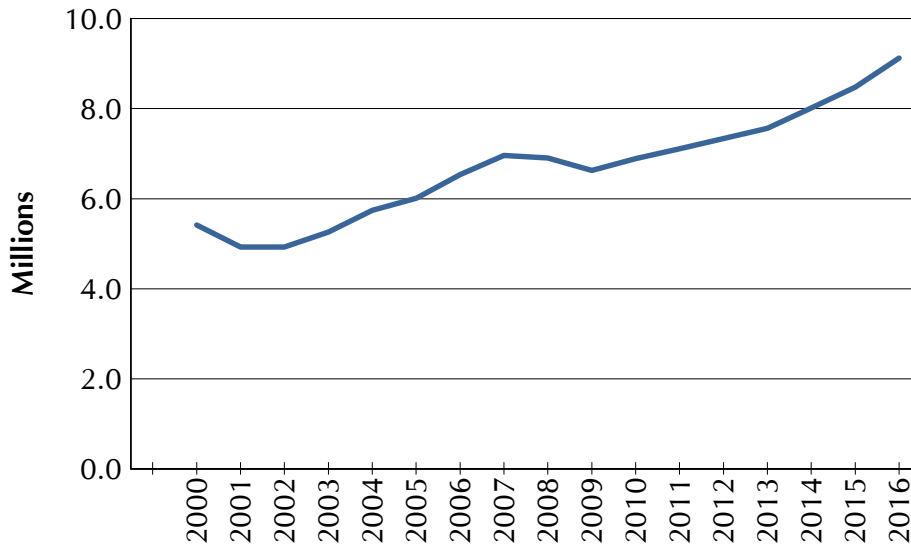
Taxable Sales of Lodging Establishments, 1996-2016

Current Dollars



Source: Dean Runyan Associates and Colorado Department of Revenue. Taxable Sales includes room rentals and other sales (e.g., food, entertainment) of lodging establishments. Some taxable room rentals (e.g., condos) not included.

Domestic Visitors to Colorado by Air Transportation, 2000-2016



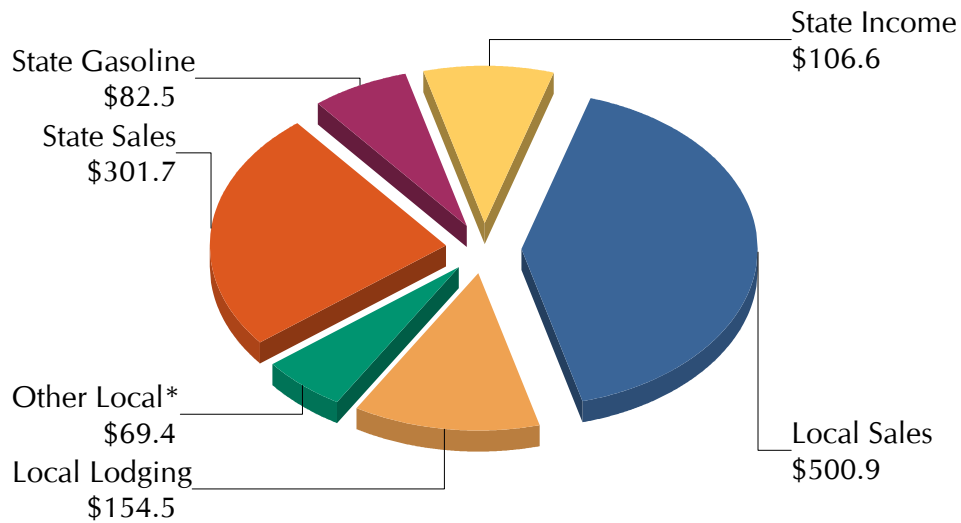
Source: Dean Runyan Associates and Bureau of Transportation Origin-Destination Survey. This is an estimate of visitation, not the amount of spending in Colorado.

TAX IMPACTS

Approximately one-half of all travel-generated tax receipts accrue to local governments in Colorado. Local taxes include room taxes, sales taxes and auto rental taxes levied by cities, counties and special districts and regions. Property taxes are not included. State taxes include the 2.9 percent state sales tax, the 22 cents per gallon motor fuel tax, and income taxes on travel-generated earnings and travel-related business income.

Travel-Generated Tax Impacts: Local & State Receipts, 2016p

(\$Million)



Source: Dean Runyan Associates.

*Other Local includes Passenger Facility Charge (PFC) and Auto Rental Tax.

Colorado Travel Impacts, 2006-2016p

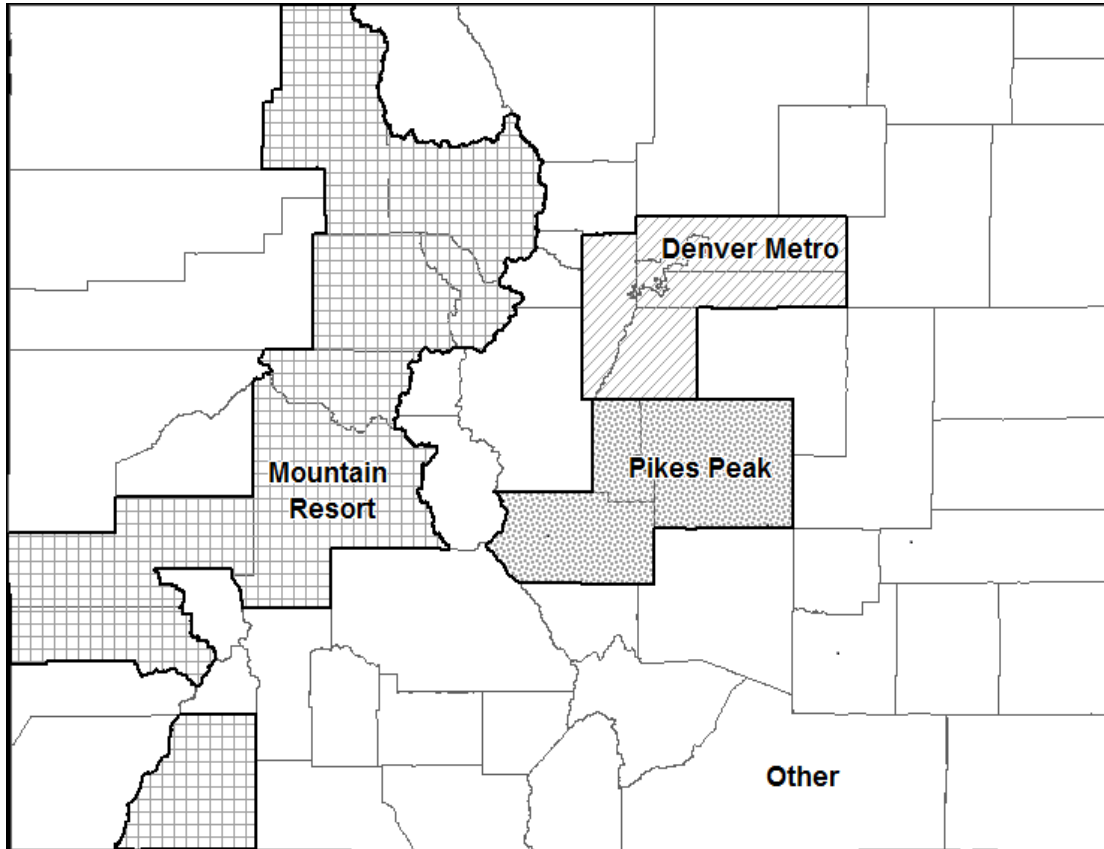
	2006	2008	2010	2012	2013	2014	2015	2016p
Total Direct Travel Spending (\$Million)								
Destination Spending	12,360	13,558	12,963	14,706	15,420	16,562	17,070	17,623
Other Travel*	1,616	1,709	1,603	1,796	1,875	2,015	2,066	2,038
Total Direct Spending	13,976	15,267	14,566	16,501	17,296	18,577	19,136	19,660
Visitor Spending by Type of Traveler Accommodation (\$Million)								
Hotel, Motel, Rented Room	7,450	8,253	7,805	9,016	9,641	10,623	11,206	11,679
Campground	321	311	313	325	313	307	319	324
Private Home (VFR)	2,279	2,462	2,438	2,675	2,738	2,838	2,876	2,936
Vacation Home	540	602	613	647	656	672	674	691
Day Travel	1,770	1,930	1,794	2,043	2,072	2,122	1,995	1,992
Destination Spending	12,360	13,558	12,963	14,706	15,420	16,562	17,070	17,623
Visitor Spending by Commodity Purchased (\$Million)								
Accommodations	2,419	2,791	2,496	2,827	3,061	3,481	3,870	4,161
Food Service	2,425	2,655	2,773	3,161	3,368	3,662	3,891	4,091
Food Stores	514	575	572	651	678	730	764	767
Local Tran. & Gas	1,943	2,319	1,972	2,326	2,325	2,326	1,940	1,869
Arts, Ent. & Rec.	1,736	1,765	1,740	1,916	2,000	2,112	2,177	2,228
Retail Sales	1,869	1,887	1,924	2,112	2,189	2,297	2,360	2,393
Visitor Air Tran.	1,455	1,567	1,486	1,711	1,799	1,953	2,068	2,114
Destination Spending	12,360	13,558	12,963	14,706	15,420	16,562	17,070	17,623
Industry Earnings Generated by Travel Spending (\$Million)								
Accom. & Food Serv.	1,698	1,939	1,845	2,059	2,180	2,347	2,560	2,728
Arts, Ent. & Rec.	853	951	903	970	1,024	1,095	1,199	1,243
Retail**	346	367	353	371	382	403	428	446
Ground Tran.	95	102	102	102	105	116	125	132
Visitor Air Tran.	399	363	328	381	478	495	529	609
Other Travel*	533	480	425	472	579	594	616	675
Total Earnings	3,924	4,201	3,957	4,355	4,748	5,049	5,456	5,832
Industry Employment Generated by Travel Spending (Thousand Jobs)								
Accom. & Food Serv.	78.3	80.8	76.4	81.3	84.2	87.4	90.7	93.8
Arts, Ent. & Rec.	32.6	34.5	32.7	34.1	35.0	36.3	37.7	38.5
Retail**	13.9	14.2	13.5	13.9	14.2	14.5	14.9	15.3
Ground Tran.	3.3	3.4	3.0	3.0	3.1	3.3	3.4	3.6
Visitor Air Tran.	6.1	6.5	5.5	5.7	6.2	6.3	6.3	6.7
Other Travel*	8.4	8.7	7.2	7.2	7.7	7.7	7.6	7.5
Total Employment	142.6	148.2	138.4	145.1	150.4	155.4	160.6	165.4
Government Revenue Generated by Travel Spending (\$Million)								
Local Tax Receipts	421	471	460	521	556	615	663	725
State Tax Receipts	360	381	366	397	418	446	470	491
Federal Tax Receipts	935	1,000	946	957	1,092	1,163	1,235	1,293
Total Direct Gov't Revenue	1,715	1,852	1,772	1,875	2,066	2,224	2,368	2,509

Details may not add to totals due to rounding.

*Other Travel includes resident air travel and travel agencies. **Retail includes gasoline.

This page intentionally blank

III. REGIONAL OVERNIGHT VISITOR IMPACTS 2006-2016p



COLORADO REGIONS

Denver Metro

Adams
Arapahoe
Broomfield
Denver
Douglas
Jefferson

Pikes Peak

El Paso
Fremont
Teller

Mountain Resort

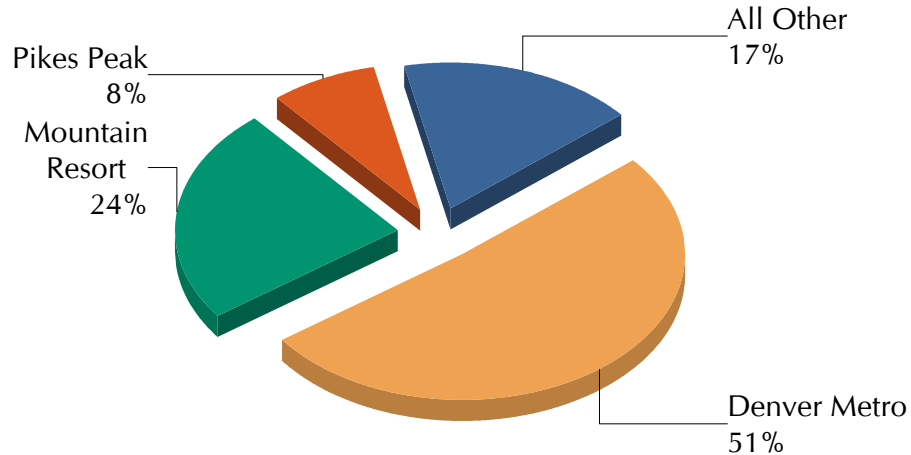
Eagle
Grand
Gunnison
La Plata
Montrose
Pitkin
Routt
San Miguel
Summit

Other

all remaining counties

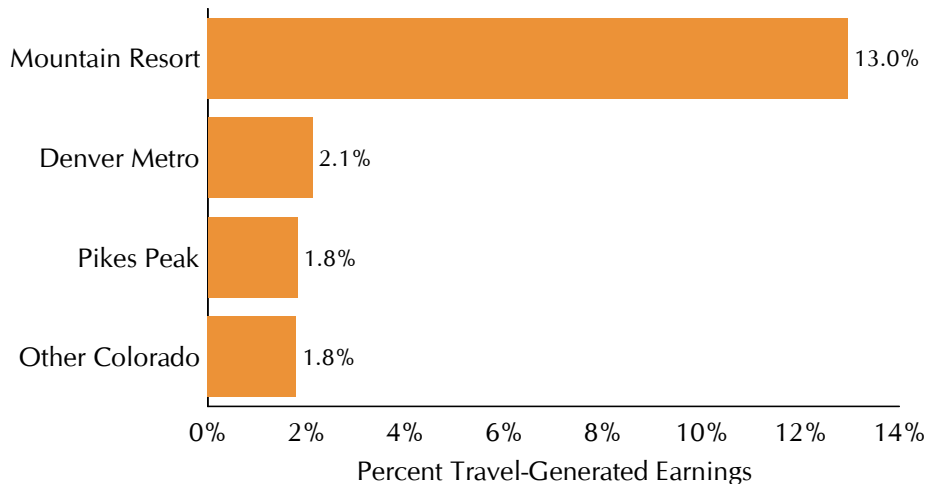
Travel-generated earnings are distributed approximately half to the Denver Metro region, one-quarter (24%) to the Mountain Resort region, and the remainder to the Pikes Peak region and all other counties. However, the size of travel-generated earnings in relation to total earnings is actually much lower in the Denver Metro region as compared to the Mountain Resort region (as shown in the bar chart).

Overnight Travel-Generated Earnings by Region, 2016p



Source: Dean Runyan Associates, U.S. Bureau of Labor Statistics and U.S. Bureau of Economic Analysis.

Overnight Travel-Generated Earnings as a percentage of Total Earnings by Region, 2016p



Source: Dean Runyan Associates, U.S. Bureau of Labor Statistics and U.S. Bureau of Economic Analysis.

Denver Metro Overnight Travel Impacts, 2006-2016p

	2006	2008	2010	2012	2013	2014	2015	2016p
Total Direct Travel Spending (\$Million)								
Destination Spending	4,601	5,152	4,926	5,722	6,092	6,670	6,908	7,129
Other Travel*	1,361	1,429	1,380	1,565	1,659	1,789	1,840	1,803
Total Direct Spending	5,963	6,582	6,307	7,287	7,751	8,458	8,749	8,932
Visitor Spending by Type of Traveler Accommodation (\$Million)								
Hotel, Motel, Rented Room	3,254	3,695	3,514	4,140	4,463	4,964	5,174	5,362
Campground	22	20	20	21	20	20	21	21
Private Home (VFR)	1,292	1,400	1,355	1,520	1,568	1,644	1,672	1,704
Vacation Home	33	37	37	40	41	42	41	42
Destination Spending	4,601	5,152	4,926	5,722	6,092	6,670	6,908	7,129
Visitor Spending by Commodity Purchased (\$Million)								
Accommodations	783	958	849	1,001	1,106	1,305	1,440	1,538
Food Service	707	793	823	967	1,049	1,159	1,224	1,285
Food Stores	128	146	145	168	177	192	200	201
Local Tran. & Gas	843	980	889	1,020	1,043	1,063	961	956
Arts, Ent. & Rec.	437	461	455	510	538	578	596	613
Retail Sales	558	575	581	658	695	743	761	770
Visitor Air Tran.	1,145	1,241	1,185	1,398	1,484	1,629	1,728	1,765
Destination Spending	4,601	5,152	4,926	5,722	6,092	6,670	6,908	7,129
Industry Earnings Generated by Travel Spending (\$Million)								
Accom. & Food Serv.	543	644	605	684	728	791	868	932
Arts, Ent. & Rec.	221	254	229	254	271	293	320	333
Retail**	100	108	103	111	116	124	131	137
Ground Tran.	71	77	77	77	79	88	94	100
Visitor Air Tran.	380	343	311	362	458	476	508	586
Other Travel*	482	426	392	437	541	556	576	632
Total Earnings	1,797	1,852	1,716	1,925	2,195	2,327	2,497	2,720
Industry Employment Generated by Travel Spending (Thousand Jobs)								
Accom. & Food Serv.	21.6	23.6	22.3	23.9	25.0	26.3	27.4	29.0
Arts, Ent. & Rec.	6.4	6.9	6.4	6.8	7.3	7.6	7.8	8.0
Retail**	3.6	3.8	3.6	3.8	4.0	4.2	4.2	4.0
Ground Tran.	2.5	2.6	2.3	2.3	2.3	2.5	2.6	3.0
Visitor Air Tran.	5.7	6.1	5.2	5.3	5.8	5.9	6.0	6.0
Other Travel*	7.2	7.6	6.5	6.5	7.0	7.0	6.9	7.0
Total Employment	46.9	50.6	46.2	48.6	51.5	53.4	54.9	57.0
Government Revenue Generated by Travel Spending (\$Million)								
Local Tax Receipts	190	219	211	241	261	295	316	336
State Tax Receipts	127	136	130	144	156	169	178	187
Total Gov't Revenue	317	356	341	385	417	464	494	523

Details may not add to totals due to rounding.

*Other Travel includes resident air travel and travel agencies. **Retail includes gasoline.

The Denver Metro region includes Adams, Arapahoe, Broomfield, Denver, Douglas and Jefferson counties.

Mountain Resort Overnight Travel Impacts, 2006-2016p

	2006	2008	2010	2012	2013	2014	2015	2016p
Total Direct Travel Spending (\$Million)								
Destination Spending	2,814	3,007	2,891	3,200	3,399	3,691	3,973	4,164
Other Travel*	53	60	54	53	57	64	67	69
Total Direct Spending	2,868	3,067	2,945	3,253	3,456	3,755	4,040	4,233
Visitor Spending by Type of Traveler Accommodation (\$Million)								
Hotel, Motel, Rented Room	2,248	2,391	2,253	2,531	2,719	2,994	3,256	3,427
Campground	78	79	78	81	79	78	81	82
Private Home (VFR)	151	160	169	179	186	193	202	208
Vacation Home	338	377	391	408	415	428	435	447
Destination Spending	2,814	3,007	2,891	3,200	3,399	3,691	3,973	4,164
Visitor Spending by Commodity Purchased (\$Million)								
Accommodations	954	1,068	941	1,037	1,130	1,262	1,422	1,538
Food Service	673	712	747	838	893	973	1,048	1,100
Food Stores	163	179	178	201	210	229	242	244
Local Tran. & Gas	145	169	151	174	176	179	158	155
Arts, Ent. & Rec.	432	430	426	463	482	515	540	552
Retail Sales	278	272	279	302	312	328	342	346
Visitor Air Tran.	170	178	170	185	196	206	221	229
Destination Spending	2,814	3,007	2,891	3,200	3,399	3,691	3,973	4,164
Industry Earnings Generated by Travel Spending (\$Million)								
Accom. & Food Serv.	525	580	543	605	646	698	760	802
Arts, Ent. & Rec.	232	254	245	265	287	309	342	354
Retail**	60	63	62	64	66	70	76	79
Ground Tran.	11	12	12	12	12	13	14	15
Visitor Air Tran.	6	6	5	7	8	8	8	9
Other Travel*	6	7	4	4	5	5	6	6
Total Earnings	840	921	870	957	1,024	1,104	1,206	1,265
Industry Employment Generated by Travel Spending (Thousand Jobs)								
Accom. & Food Serv.	20.9	20.6	19.3	20.6	21.2	22.1	22.8	23.0
Arts, Ent. & Rec.	6.8	6.9	6.8	7.4	7.6	8.0	8.4	9.0
Retail**	2.2	2.2	2.1	2.1	2.2	2.3	2.4	2.0
Ground Tran.	0.4	0.4	0.3	0.3	0.4	0.4	0.4	0.0
Visitor Air Tran.	0.2	0.2	0.1	0.2	0.2	0.2	0.2	0.0
Other Travel*	0.1	0.1	0.1	0.1	0.1	0.1	0.1	0.0
Total Employment	30.6	30.5	28.8	30.8	31.7	33.0	34.3	35.0
Government Revenue Generated by Travel Spending (\$Million)								
Local Tax Receipts	102	112	108	122	131	144	160	178
State Tax Receipts	71	77	73	80	86	93	101	107
Total Gov't Revenue	174	188	181	202	216	237	261	285

Details may not add to totals due to rounding.

*Other Travel includes resident air travel and travel agencies. **Retail includes gasoline.

The Mountain Resort region includes Eagle, Grand, Gunnison, La Plata, Montrose, Pitkin, Routt, San Miguel and Summit counties.

Pikes Peak Overnight Travel Impacts, 2006-2016p

	2006	2008	2010	2012	2013	2014	2015	2016p
Total Direct Travel Spending (\$Million)								
Destination Spending	1,060	1,172	1,142	1,213	1,235	1,300	1,364	1,448
Other Travel*	125	129	109	112	94	94	90	95
Total Direct Spending	1,185	1,302	1,251	1,325	1,329	1,394	1,454	1,543
Visitor Spending by Type of Traveler Accommodation (\$Million)								
Hotel, Motel, Rented Room	688	788	760	808	834	897	965	1,042
Campground	52	48	47	49	46	46	48	48
Private Home (VFR)	290	305	303	323	321	324	318	322
Vacation Home	30	32	32	34	34	34	34	35
Destination Spending	1,060	1,172	1,142	1,213	1,235	1,300	1,364	1,448
Visitor Spending by Commodity Purchased (\$Million)								
Accommodations	213	234	220	231	240	263	303	344
Food Service	222	258	274	290	303	325	356	387
Food Stores	50	56	57	62	63	66	70	72
Local Tran. & Gas	104	131	102	125	122	120	88	80
Arts, Ent. & Rec.	174	182	186	203	213	224	232	240
Retail Sales	185	195	202	208	211	219	231	242
Visitor Air Tran.	112	116	101	95	84	83	83	82
Destination Spending	1,060	1,172	1,142	1,213	1,235	1,300	1,364	1,448
Industry Earnings Generated by Travel Spending (\$Million)								
Accom. & Food Serv.	148	171	170	189	198	209	231	245
Arts, Ent. & Rec.	70	80	75	81	83	87	95	100
Retail**	33	36	36	35	36	37	40	43
Ground Tran.	0	0	0	0	0	0	0	0
Visitor Air Tran.	10	10	10	10	9	9	9	10
Other Travel*	12	12	11	12	11	11	11	13
Total Earnings	273	309	302	327	337	352	387	410
Industry Employment Generated by Travel Spending (Thousand Jobs)								
Accom. & Food Serv.	8.0	8.4	8.0	8.7	9.0	9.2	9.8	10.0
Arts, Ent. & Rec.	3.6	4.0	3.7	3.9	3.9	4.1	4.2	4.0
Retail**	1.4	1.5	1.4	1.4	1.4	1.4	1.5	2.0
Ground Tran.	0.0	0.0	0.0	0.0	0.0	0.0	0.0	0.0
Visitor Air Tran.	0.2	0.2	0.2	0.2	0.2	0.2	0.2	0.0
Other Travel*	0.3	0.3	0.2	0.2	0.2	0.2	0.2	0.0
Total Employment	13.5	14.4	13.6	14.4	14.8	15.1	15.8	16.0
Government Revenue Generated by Travel Spending (\$Million)								
Local Tax Receipts	30	33	34	35	36	39	43	54
State Tax Receipts	29	32	31	33	33	35	38	40
Total Gov't Revenue	60	65	65	68	69	74	81	95

Details may not add to totals due to rounding.

*Other Travel includes resident air travel and travel agencies. **Retail includes gasoline.

The Pikes Peak region includes El Paso, Fremont and Teller counties.

All Other Overnight Travel Impacts, 2006-2016p

	2006	2008	2010	2012	2013	2014	2015	2016p
Total Direct Travel Spending (\$Million)								
Destination Spending	2,114	2,297	2,209	2,528	2,623	2,779	2,830	2,889
Other Travel*	77	91	60	66	66	69	69	70
Total Direct Spending	2,191	2,387	2,270	2,594	2,688	2,847	2,899	2,960
Visitor Spending by Type of Traveler Accommodation (\$Million)								
Hotel, Motel, Rented Room	1,260	1,379	1,278	1,538	1,625	1,769	1,811	1,848
Campground	168	163	167	174	168	164	170	172
Private Home (VFR)	547	597	611	653	664	678	685	703
Vacation Home	140	157	153	164	166	169	164	167
Destination Spending	2,114	2,297	2,209	2,528	2,623	2,779	2,830	2,889
Visitor Spending by Commodity Purchased (\$Million)								
Accommodations	469	532	487	559	585	652	704	741
Food Service	469	513	530	617	650	697	728	755
Food Stores	147	165	163	188	194	206	213	212
Local Tran. & Gas	243	293	248	297	299	302	251	241
Arts, Ent. & Rec.	375	375	361	401	416	429	435	439
Retail Sales	384	386	391	433	443	458	464	465
Visitor Air Tran.	27	32	29	34	35	35	36	37
Destination Spending	2,114	2,297	2,209	2,528	2,623	2,779	2,830	2,889
Industry Earnings Generated by Travel Spending (\$Million)								
Accom. & Food Serv.	343	388	372	410	429	459	493	525
Arts, Ent. & Rec.	180	199	195	204	210	223	243	249
Retail**	73	78	75	80	81	85	89	92
Ground Tran.	13	13	13	13	14	15	16	17
Visitor Air Tran.	3	3	3	2	2	2	3	3
Other Travel*	32	36	18	18	22	22	24	24
Total Earnings	644	718	677	727	758	806	867	911
Industry Employment Generated by Travel Spending (Thousand Jobs)								
Accom. & Food Serv.	20.0	20.3	19.1	20.2	20.7	21.4	21.9	23.0
Arts, Ent. & Rec.	9.8	10.5	9.9	9.8	9.9	10.3	10.7	11.0
Retail**	3.3	3.4	3.2	3.3	3.3	3.4	3.4	4.0
Ground Tran.	0.4	0.4	0.4	0.4	0.4	0.4	0.4	0.0
Visitor Air Tran.	0.1	0.1	0.1	0.0	0.0	0.0	0.0	0.0
Other Travel*	0.8	0.7	0.4	0.4	0.4	0.4	0.4	0.0
Total Employment	34.4	35.4	33.1	34.1	34.8	35.9	36.9	38.0
Government Revenue Generated by Travel Spending (\$Million)								
Local Tax Receipts	63	70	69	81	85	92	97	105
State Tax Receipts	60	65	62	69	71	76	79	81
Total Gov't Revenue	123	135	132	150	156	168	176	186

Details may not add to totals due to rounding.

*Other Travel includes resident air travel and travel agencies. **Retail includes gasoline.

Other Colorado includes all counties not within Denver, Mountain Resort or Pikes Peak regions.

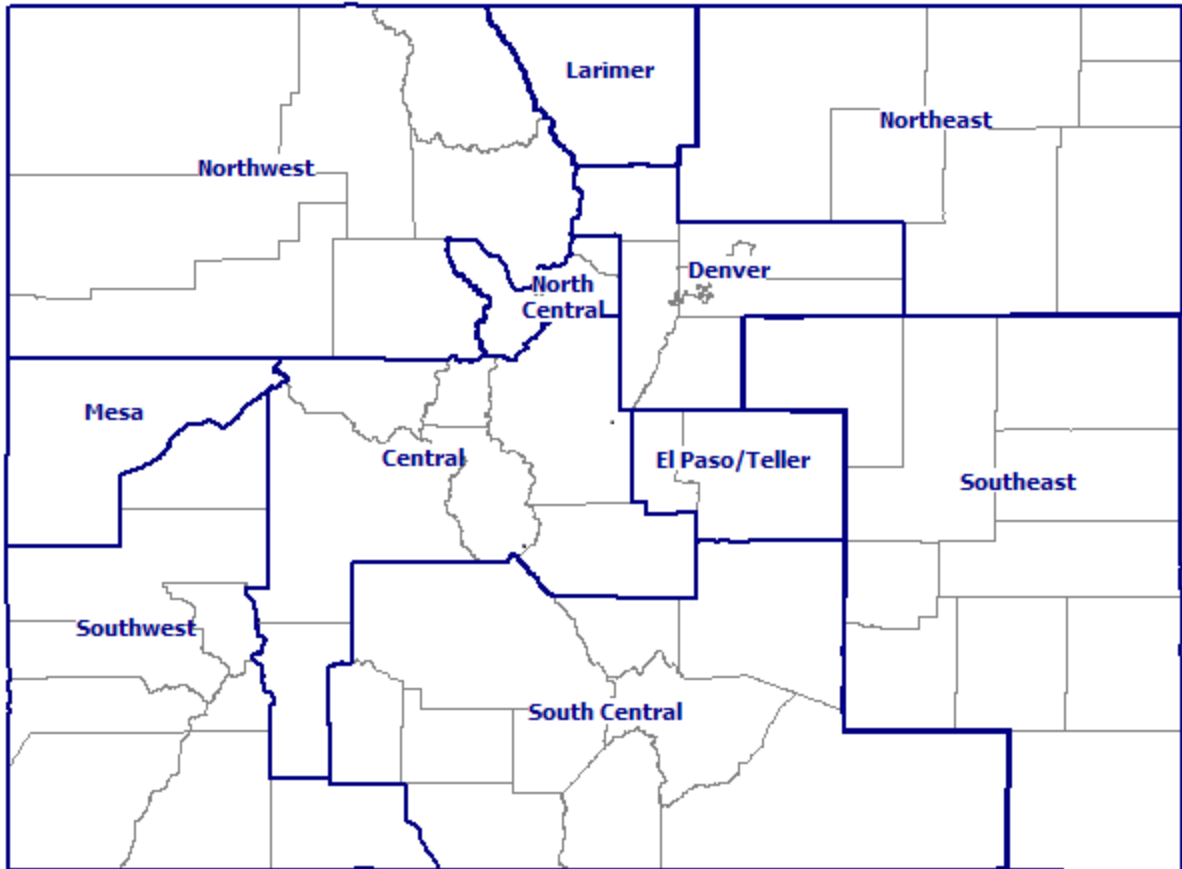
Regional Overnight Travel Impacts, 2016p

	Denver Metro	Mountain Resort	Pikes Peak	Other Colorado
Total Direct Travel Spending (\$Million)				
Destination Spending	7,129	4,164	1,448	2,889
Other Travel*	1,803	69	95	70
Total Direct Spending	8,932	4,233	1,543	2,959
Visitor Spending by Type of Traveler Accommodation (\$Million)				
Hotel, Motel, Rented Room	5,362	3,427	1,042	1,848
Campground	21	82	48	172
Private Home (VFR)	1,704	208	322	703
Vacation Home	42	447	35	167
Destination Spending	7,129	4,164	1,447	2,890
Visitor Spending by Commodity Purchased (\$Million)				
Accommodations	1,538	1,538	344	741
Food Service	1,285	1,100	387	755
Food Stores	201	244	72	212
Local Tran. & Gas	956	155	80	241
Arts, Ent. & Rec.	613	552	240	439
Retail Sales	770	346	242	465
Visitor Air Tran.	1,765	229	82	37
Destination Spending	7,128	4,164	1,447	2,890
Industry Earnings Generated by Travel Spending (\$Million)				
Accom. & Food Serv.	932	802	245	525
Arts, Ent. & Rec.	333	354	100	249
Retail**	137	79	43	92
Ground Tran.	100	15	0	17
Visitor Air Tran.	586	9	10	3
Other Travel*	632	6	13	24
Total Earnings	2,720	1,265	411	910
Industry Employment Generated by Travel Spending (Thousand Jobs)				
Accom. & Food Serv.	29.0	23.0	10.0	23.0
Arts, Ent. & Rec.	8.0	9.0	4.0	11.0
Retail**	4.0	2.0	2.0	4.0
Ground Tran.	3.0	0.0	0.0	0.0
Visitor Air Tran.	6.0	0.0	0.0	0.0
Other Travel*	7.0	0.0	0.0	0.0
Total Employment	57.0	34.0	16.0	38.0
Government Revenue Generated by Travel Spending (\$Million)				
Local Tax Receipts	336	178	54	105
State Tax Receipts	187	107	40	81
Total Gov't Revenue	523	285	94	186

Details may not add to totals due to rounding.

*Other Travel includes resident air travel and travel agencies. **Retail includes gasoline.

IV. DISTRICT OVERNIGHT VISITOR IMPACTS 2006-2016p



COLORADO DISTRICTS

Northwest District

Eagle
Garfield
Grand
Jackson
Moffat
Rio Blanco
Routt

Mesa District

Mesa

Southwest District

Archuleta
Delta
Dolores
La Plata
Montezuma
Montrose
Ouray
San Juan
San Miguel

North Central District

Clear Creek
Gilpin
Summit

Central District

Chaffee
Fremont
Gunnison
Hinsdale
Lake
Park
Pitkin

South Central District

Alamosa
Conejos
Costilla
Custer
Huerfano
Las Animas
Mineral
Pueblo
Rio Grande
Saguache

Larimer District

Larimer

Denver District

Adams
Arapahoe
Boulder
Broomfield
Denver
Douglas
Jefferson

El Paso/Teller District

El Paso
Teller

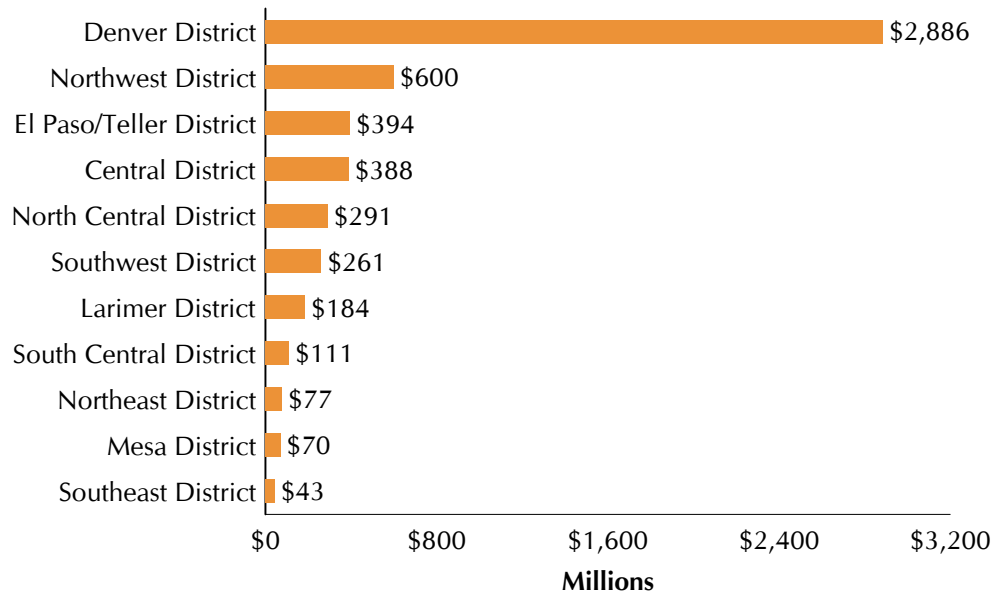
Northeast District

Logan
Morgan
Phillips
Sedgwick
Washington
Weld
Yuma

Southeast District

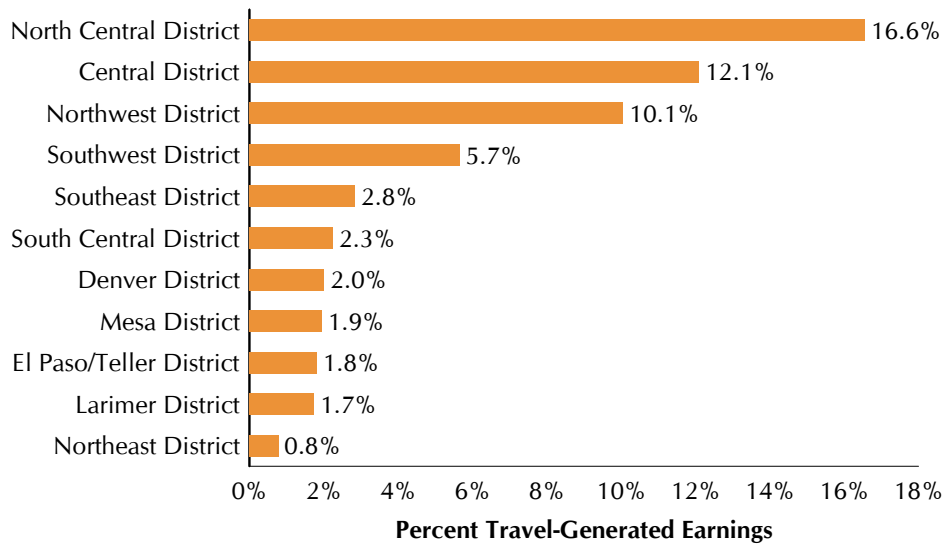
Baca
Bent
Cheyenne
Crowley
Elbert
Kiowa
Kit Carson
Lincoln
Otero
Prowers

Overnight Travel-Generated Earnings by District, 2016p (Millions)



Source: Dean Runyan Associates, U.S. Bureau of Labor Statistics and U.S. Bureau of Economic Analysis.

Overnight Travel-Generated Earnings as a percentage of Total Earnings by District, 2016p



Source: Dean Runyan Associates, U.S. Bureau of Labor Statistics and U.S. Bureau of Economic Analysis.

Northwest District Overnight Travel Impacts, 2006-2016p

	2006	2008	2010	2012	2013	2014	2015	2016p
Total Direct Travel Spending (\$Million)								
Destination Spending	1,378	1,482	1,342	1,570	1,634	1,760	1,878	1,940
Other Travel*	16	16	12	11	11	11	11	12
Total Direct Spending	1,393	1,498	1,354	1,581	1,644	1,771	1,889	1,952
Visitor Spending by Type of Traveler Accommodation (\$Million)								
Hotel, Motel, Rented Room	1,085	1,154	1,004	1,223	1,283	1,401	1,512	1,564
Campground	40	44	39	41	40	39	41	41
Private Home (VFR)	83	90	90	92	93	96	99	101
Vacation Home	169	194	209	214	218	224	227	234
Destination Spending	1,378	1,482	1,342	1,570	1,634	1,760	1,878	1,940
Visitor Spending by Commodity Purchased (\$Million)								
Accommodations	444	497	407	480	512	562	636	675
Food Service	329	353	349	420	439	476	507	527
Food Stores	81	91	86	102	105	114	120	119
Local Tran. & Gas	75	88	76	90	90	91	78	76
Arts, Ent. & Rec.	225	225	212	245	252	268	279	284
Retail Sales	148	148	142	163	166	173	178	179
Visitor Air Tran.	76	80	69	70	71	75	80	81
Destination Spending	1,378	1,482	1,342	1,570	1,634	1,760	1,878	1,940
Industry Earnings Generated by Travel Spending (\$Million)								
Accom. & Food Serv.	254	283	259	295	308	333	362	382
Arts, Ent. & Rec.	111	123	116	123	134	144	158	165
Retail**	32	35	32	35	36	38	40	41
Ground Tran.	5	5	5	5	5	6	6	7
Visitor Air Tran.	1	1	2	3	3	3	4	4
Other Travel*	3	3	2	2	2	2	2	2
Total Earnings	406	449	415	463	487	525	571	600
Industry Employment Generated by Travel Spending (Jobs)								
Accom. & Food Serv.	10,220	10,180	9,270	10,100	10,240	10,620	11,030	11,240
Arts, Ent. & Rec.	3,390	3,820	3,700	3,930	4,010	4,250	4,380	4,790
Retail**	1,160	1,160	1,030	1,110	1,130	1,140	1,190	1,210
Ground Tran.	160	170	150	150	150	160	170	170
Visitor Air Tran.	30	30	30	60	70	70	70	70
Other Travel*	70	60	40	40	40	40	40	40
Total Employment	15,030	15,420	14,220	15,380	15,630	16,270	16,870	17,520
Government Revenue Generated by Travel Spending (\$Million)								
Local Tax Receipts	51	55	49	58	61	67	75	83
State Tax Receipts	35	38	34	39	41	44	48	50
Total Gov't Revenue	86	93	83	98	103	111	123	133

Details may not add to totals due to rounding.

*Other Travel includes resident air travel and travel agencies. **Retail includes gasoline.

The Northwest District includes Eagle, Garfield, Grand, Jackson, Moffat, Rio Blanco and Routt counties.

Mesa District Overnight Travel Impacts, 2006-2016p

	2006	2008	2010	2012	2013	2014	2015	2016p
Total Direct Travel Spending (\$Million)								
Destination Spending	200	241	210	232	236	240	247	247
Other Travel*	24	31	30	35	33	35	34	35
Total Direct Spending	224	273	240	267	269	275	281	282
Visitor Spending by Type of Traveler Accommodation (\$Million)								
Hotel, Motel, Rented Room	132	164	131	146	150	153	159	158
Campground	9	9	10	11	10	10	10	11
Private Home (VFR)	54	63	63	68	69	71	71	72
Vacation Home	5	6	6	6	6	6	6	6
Destination Spending	200	241	210	232	236	240	247	247
Visitor Spending by Commodity Purchased (\$Million)								
Accommodations	44	62	48	50	50	51	56	57
Food Service	43	51	47	52	54	55	58	59
Food Stores	13	15	14	16	16	16	17	17
Local Tran. & Gas	20	24	20	24	24	23	19	18
Arts, Ent. & Rec.	23	25	23	24	24	24	25	25
Retail Sales	35	38	35	38	38	38	38	38
Visitor Air Tran.	22	27	25	29	30	32	34	34
Destination Spending	200	241	210	232	236	240	247	247
Industry Earnings Generated by Travel Spending (\$Million)								
Accom. & Food Serv.	31	40	36	39	41	44	46	47
Arts, Ent. & Rec.	9	11	9	8	9	9	10	10
Retail**	6	7	6	7	7	7	7	7
Ground Tran.	1	1	1	1	1	1	1	1
Visitor Air Tran.	3	3	2	1	2	2	2	2
Other Travel*	4	4	3	2	2	2	2	2
Total Earnings	53	65	57	58	61	64	68	70
Industry Employment Generated by Travel Spending (Jobs)								
Accom. & Food Serv.	1,700	1,880	1,670	1,760	1,810	1,900	1,910	1,930
Arts, Ent. & Rec.	900	1,000	850	790	810	750	760	800
Retail**	260	280	260	260	260	260	270	270
Ground Tran.	30	30	30	30	30	30	30	30
Visitor Air Tran.	60	60	40	30	40	40	40	40
Other Travel*	80	90	60	40	40	40	40	40
Total Employment	3,030	3,340	2,910	2,900	2,990	3,020	3,050	3,100
Government Revenue Generated by Travel Spending (\$Million)								
Local Tax Receipts	7	9	7	8	8	8	9	9
State Tax Receipts	6	6	6	6	6	6	6	7
Total Gov't Revenue	12	15	13	14	14	14	15	15

Details may not add to totals due to rounding.

*Other Travel includes resident air travel and travel agencies. **Retail includes gasoline.

The Mesa District includes Mesa county.

Southwest District Overnight Travel Impacts, 2006-2016p

	2006	2008	2010	2012	2013	2014	2015	2016p
Total Direct Travel Spending (\$Million)								
Destination Spending	588	628	607	673	719	760	810	866
Other Travel*	23	26	26	27	30	34	36	36
Total Direct Spending	610	653	632	700	749	795	846	902
Visitor Spending by Type of Traveler Accommodation (\$Million)								
Hotel, Motel, Rented Room	382	406	376	426	473	511	556	606
Campground	70	72	75	78	75	73	76	77
Private Home (VFR)	66	71	78	84	86	88	90	94
Vacation Home	70	78	79	85	86	88	87	89
Destination Spending	588	628	607	673	719	760	810	866
Visitor Spending by Commodity Purchased (\$Million)								
Accommodations	162	178	164	178	193	211	236	262
Food Service	126	134	136	154	168	179	195	212
Food Stores	38	42	41	46	49	51	55	57
Local Tran. & Gas	61	71	63	73	74	76	67	66
Arts, Ent. & Rec.	81	82	78	84	90	94	100	106
Retail Sales	80	78	80	85	89	91	95	98
Visitor Air Tran.	40	43	44	53	56	59	61	65
Destination Spending	588	628	607	673	719	760	810	866
Industry Earnings Generated by Travel Spending (\$Million)								
Accom. & Food Serv.	110	120	112	121	131	138	150	162
Arts, Ent. & Rec.	42	46	45	50	54	58	63	68
Retail**	17	17	17	17	18	19	20	21
Ground Tran.	5	5	5	5	5	6	6	7
Visitor Air Tran.	2	2	1	2	2	2	2	2
Other Travel*	1	1	1	1	1	1	1	1
Total Earnings	176	191	181	196	211	223	242	261
Industry Employment Generated by Travel Spending (Jobs)								
Accom. & Food Serv.	5,520	5,300	4,800	4,940	5,260	5,350	5,510	5,760
Arts, Ent. & Rec.	1,840	1,700	1,680	1,800	1,830	1,890	2,040	2,160
Retail**	760	750	710	710	730	740	770	820
Ground Tran.	170	170	150	150	160	170	170	180
Visitor Air Tran.	50	60	50	50	50	50	50	50
Other Travel*	40	40	30	30	30	30	30	30
Total Employment	8,390	8,020	7,430	7,690	8,060	8,230	8,570	9,000
Government Revenue Generated by Travel Spending (\$Million)								
Local Tax Receipts	19	20	20	22	24	25	28	31
State Tax Receipts	16	16	16	17	18	19	21	22
Total Gov't Revenue	34	37	36	39	42	44	49	53

Details may not add to totals due to rounding.

*Other Travel includes resident air travel and travel agencies. **Retail includes gasoline.

The Southwest District includes Archuleta, Delta, Dolores, La Plata, Montezuma, Montrose, Ouray, San Juan and San Miguel counties.

North Central District Overnight Travel Impacts, 2006-2016p

	2006	2008	2010	2012	2013	2014	2015	2016p
Total Direct Travel Spending (\$Million)								
Destination Spending	716	760	720	791	859	938	1,015	1,113
Other Travel*	0	0	0	0	0	0	0	0
Total Direct Spending	717	761	720	791	859	939	1,016	1,114
Visitor Spending by Type of Traveler Accommodation (\$Million)								
Hotel, Motel, Rented Room	625	666	624	690	757	834	908	1,004
Campground	19	18	18	18	18	17	18	18
Private Home (VFR)	15	16	20	20	21	22	22	23
Vacation Home	57	60	59	62	63	65	67	69
Destination Spending	716	760	720	791	859	938	1,015	1,113
Visitor Spending by Commodity Purchased (\$Million)								
Accommodations	257	293	258	282	316	359	407	463
Food Service	165	175	183	201	218	240	262	290
Food Stores	39	42	42	47	50	55	59	62
Local Tran. & Gas	22	27	22	26	26	26	20	19
Arts, Ent. & Rec.	164	156	147	162	172	178	182	188
Retail Sales	69	67	68	73	77	81	86	91
Visitor Air Tran.	0	0	0	0	0	0	0	0
Destination Spending	716	760	720	791	859	938	1,015	1,113
Industry Earnings Generated by Travel Spending (\$Million)								
Accom. & Food Serv.	122	136	123	134	144	155	172	184
Arts, Ent. & Rec.	63	66	71	71	72	76	83	88
Retail**	14	15	14	15	15	16	18	19
Ground Tran.	1	1	1	1	1	1	1	1
Visitor Air Tran.	0	0	0	0	0	0	0	0
Other Travel*	0	0	0	0	0	0	0	0
Total Earnings	200	218	209	220	232	248	274	292
Industry Employment Generated by Travel Spending (Jobs)								
Accom. & Food Serv.	5,550	5,520	5,300	5,740	5,900	6,110	6,360	6,550
Arts, Ent. & Rec.	2,110	2,110	2,230	2,320	2,360	2,450	2,580	2,670
Retail**	560	540	540	550	580	610	630	660
Ground Tran.	20	20	20	20	20	20	20	20
Visitor Air Tran.	0	0	0	0	0	0	0	0
Other Travel*	10	10	0	0	0	0	0	0
Total Employment	8,250	8,200	8,090	8,620	8,850	9,190	9,600	9,900
Government Revenue Generated by Travel Spending (\$Million)								
Local Tax Receipts	23	26	25	28	31	34	38	44
State Tax Receipts	19	20	19	21	22	25	27	30
Total Gov't Revenue	41	46	44	48	53	59	65	74

Details may not add to totals due to rounding.

*Other Travel includes resident air travel and travel agencies. **Retail includes gasoline.

The North Central District includes Clear Creek, Gilpin, and Summit counties.

Central District Overnight Travel Impacts, 2006-2016p

	2006	2008	2010	2012	2013	2014	2015	2016p
Total Direct Travel Spending (\$Million)								
Destination Spending	798	841	876	911	955	1,032	1,089	1,108
Other Travel*	18	20	17	17	18	19	20	21
Total Direct Spending	815	861	893	927	973	1,051	1,109	1,130
Visitor Spending by Type of Traveler Accommodation (\$Million)								
Hotel, Motel, Rented Room	599	635	664	687	727	801	850	864
Campground	44	40	42	44	43	42	44	44
Private Home (VFR)	60	63	66	71	74	76	79	81
Vacation Home	96	104	104	110	111	114	116	119
Destination Spending	798	841	876	911	955	1,032	1,089	1,108
Visitor Spending by Commodity Purchased (\$Million)								
Accommodations	247	272	263	269	285	322	352	370
Food Service	190	200	227	238	250	270	285	290
Food Stores	48	53	56	60	61	66	69	67
Local Tran. & Gas	40	48	42	49	49	50	43	43
Arts, Ent. & Rec.	126	125	135	134	138	146	151	149
Retail Sales	90	87	96	98	100	105	107	106
Visitor Air Tran.	56	57	58	64	72	74	81	85
Destination Spending	798	841	876	911	955	1,032	1,089	1,108
Industry Earnings Generated by Travel Spending (\$Million)								
Accom. & Food Serv.	159	174	170	187	199	216	230	243
Arts, Ent. & Rec.	79	86	84	88	94	101	114	112
Retail**	19	19	20	20	20	21	22	23
Ground Tran.	3	3	3	3	3	3	4	4
Visitor Air Tran.	3	4	2	2	3	3	3	4
Other Travel*	3	3	2	2	2	3	3	3
Total Earnings	265	289	281	302	322	348	377	388
Industry Employment Generated by Travel Spending (Jobs)								
Accom. & Food Serv.	6,570	6,390	6,120	6,400	6,570	6,860	6,890	7,020
Arts, Ent. & Rec.	1,940	1,910	1,830	1,880	1,900	1,950	2,030	2,100
Retail**	770	750	750	740	750	770	790	810
Ground Tran.	100	100	90	90	90	100	100	110
Visitor Air Tran.	80	100	60	60	70	70	70	70
Other Travel*	60	70	30	30	30	30	30	30
Total Employment	9,520	9,320	8,870	9,200	9,410	9,760	9,920	10,140
Government Revenue Generated by Travel Spending (\$Million)								
Local Tax Receipts	29	31	34	36	38	42	45	50
State Tax Receipts	20	21	22	22	24	26	27	28
Total Gov't Revenue	49	52	56	59	62	68	72	78

Details may not add to totals due to rounding.

*Other Travel includes resident air travel and travel agencies. **Retail includes gasoline.

The Central District includes Chaffee, Fremont, Gunnison, Hinsdale, Lake, Park and Pitkin counties.

South Central District Overnight Travel Impacts, 2006-2016p

	2006	2008	2010	2012	2013	2014	2015	2016p
Total Direct Travel Spending (\$Million)								
Destination Spending	237	267	275	299	294	308	321	330
Other Travel*	2	2	2	2	2	2	1	1
Total Direct Spending	239	269	277	302	296	310	323	331
Visitor Spending by Type of Traveler Accommodation (\$Million)								
Hotel, Motel, Rented Room	126	151	157	175	170	184	199	205
Campground	27	25	26	27	26	26	27	27
Private Home (VFR)	65	69	72	76	77	77	76	78
Vacation Home	19	21	20	22	22	22	20	21
Destination Spending	237	267	275	299	294	308	321	330
Visitor Spending by Commodity Purchased (\$Million)								
Accommodations	53	63	65	68	64	71	80	86
Food Service	58	65	72	80	80	85	92	96
Food Stores	19	21	22	24	24	26	27	27
Local Tran. & Gas	28	36	28	35	34	34	26	23
Arts, Ent. & Rec.	30	32	33	35	35	36	37	38
Retail Sales	47	48	52	56	54	56	58	58
Visitor Air Tran.	2	3	3	2	3	2	1	2
Destination Spending	237	267	275	299	294	308	321	330
Industry Earnings Generated by Travel Spending (\$Million)								
Accom. & Food Serv.	40	47	47	48	48	50	54	58
Arts, Ent. & Rec.	26	30	29	31	31	34	38	39
Retail**	10	10	11	11	11	11	12	12
Ground Tran.	0	0	0	0	0	0	0	0
Visitor Air Tran.	0	0	0	0	0	0	0	0
Other Travel*	1	0	0	0	0	0	1	0
Total Earnings	77	88	87	91	91	96	105	111
Industry Employment Generated by Travel Spending (Jobs)								
Accom. & Food Serv.	2,980	3,180	3,060	2,970	2,980	3,050	3,110	3,280
Arts, Ent. & Rec.	1,040	1,100	950	930	920	980	1,020	1,090
Retail**	480	490	490	480	470	480	500	510
Ground Tran.	10	10	10	10	10	10	10	10
Visitor Air Tran.	0	0	0	0	0	0	0	0
Other Travel*	20	10	10	10	10	10	10	10
Total Employment	4,520	4,800	4,520	4,400	4,400	4,520	4,650	4,900
Government Revenue Generated by Travel Spending (\$Million)								
Local Tax Receipts	7	8	8	9	9	9	10	11
State Tax Receipts	7	8	8	9	8	9	10	10
Total Gov't Revenue	14	16	17	18	17	18	20	21

Details may not add to totals due to rounding.

*Other Travel includes resident air travel and travel agencies. **Retail includes gasoline.

The South Central District includes Alamosa, Conejos, Costilla, Custer, Huerfano, Las Animas, Mineral, Pueblo, Rio Grande and Saguache counties.

Larimer District Overnight Travel Impacts, 2006-2016p

	2006	2008	2010	2012	2013	2014	2015	2016p
Total Direct Travel Spending (\$Million)								
Destination Spending	429	440	427	510	534	593	618	608
Other Travel*	8	9	6	5	3	3	4	4
Total Direct Spending	437	449	433	515	537	596	622	612
Visitor Spending by Type of Traveler Accommodation (\$Million)								
Hotel, Motel, Rented Room	253	251	237	308	330	385	406	390
Campground	37	34	34	35	34	33	34	35
Private Home (VFR)	102	113	115	123	125	129	133	136
Vacation Home	37	42	41	44	45	46	45	46
Destination Spending	429	440	427	510	534	593	618	608
Visitor Spending by Commodity Purchased (\$Million)								
Accommodations	106	105	101	125	135	158	175	176
Food Service	99	103	105	128	136	153	162	160
Food Stores	32	34	33	40	41	46	48	46
Local Tran. & Gas	40	49	41	49	49	49	40	38
Arts, Ent. & Rec.	71	70	68	78	81	88	91	89
Retail Sales	81	78	78	90	92	100	102	99
Visitor Air Tran.	0	1	1	1	0	0	0	0
Destination Spending	429	440	427	510	534	593	618	608
Industry Earnings Generated by Travel Spending (\$Million)								
Accom. & Food Serv.	68	71	74	86	90	97	108	112
Arts, Ent. & Rec.	30	33	33	36	40	44	47	47
Retail**	15	15	14	16	16	18	19	19
Ground Tran.	2	2	2	2	2	2	2	2
Visitor Air Tran.	0	0	0	0	0	0	0	0
Other Travel*	4	4	3	3	4	3	4	4
Total Earnings	118	125	126	143	151	164	180	184
Industry Employment Generated by Travel Spending (Jobs)								
Accom. & Food Serv.	3,840	3,670	3,660	4,050	4,120	4,260	4,450	4,540
Arts, Ent. & Rec.	2,180	2,440	2,350	2,360	2,410	2,670	3,010	2,800
Retail**	660	660	620	660	660	680	710	690
Ground Tran.	60	60	50	50	60	60	60	60
Visitor Air Tran.	0	0	0	0	0	0	0	0
Other Travel*	100	100	70	60	70	60	60	60
Total Employment	6,840	6,930	6,750	7,180	7,320	7,720	8,290	8,160
Government Revenue Generated by Travel Spending (\$Million)								
Local Tax Receipts	12	12	12	15	16	18	19	21
State Tax Receipts	12	12	12	14	15	16	17	17
Total Gov't Revenue	24	24	24	29	31	34	37	38

Details may not add to totals due to rounding.

*Other Travel includes resident air travel and travel agencies. **Retail includes gasoline.

The Larimer District includes Larimer county.

Denver District Overnight Travel Impacts, 2006-2016p

	2006	2008	2010	2012	2013	2014	2015	2016p
Total Direct Travel Spending (\$Million)								
Destination Spending	4,956	5,539	5,306	6,151	6,541	7,133	7,381	7,623
Other Travel*	1,380	1,453	1,393	1,579	1,672	1,802	1,854	1,819
Total Direct Spending	6,335	6,993	6,699	7,729	8,213	8,935	9,235	9,441
Visitor Spending by Type of Traveler Accommodation (\$Million)								
Hotel, Motel, Rented Room	3,488	3,951	3,764	4,429	4,770	5,282	5,501	5,707
Campground	24	22	23	24	23	22	23	23
Private Home (VFR)	1,396	1,513	1,467	1,641	1,690	1,769	1,799	1,833
Vacation Home	48	53	53	58	58	60	59	60
Destination Spending	4,956	5,539	5,306	6,151	6,541	7,133	7,381	7,623
Visitor Spending by Commodity Purchased (\$Million)								
Accommodations	869	1,057	940	1,105	1,219	1,427	1,572	1,681
Food Service	791	884	920	1,077	1,166	1,279	1,349	1,418
Food Stores	153	174	172	199	210	226	235	236
Local Tran. & Gas	877	1,021	923	1,062	1,084	1,104	992	986
Arts, Ent. & Rec.	496	522	516	576	606	647	666	686
Retail Sales	625	642	650	733	773	821	840	851
Visitor Air Tran.	1,145	1,241	1,185	1,398	1,484	1,629	1,728	1,765
Destination Spending	4,956	5,539	5,306	6,151	6,541	7,133	7,381	7,623
Industry Earnings Generated by Travel Spending (\$Million)								
Accom. & Food Serv.	600	708	666	752	801	866	950	1,020
Arts, Ent. & Rec.	258	296	268	297	316	340	370	386
Retail**	112	121	115	124	130	138	146	152
Ground Tran.	72	78	78	78	80	89	96	101
Visitor Air Tran.	380	343	311	362	458	476	508	587
Other Travel*	493	440	399	445	549	564	584	641
Total Earnings	1,915	1,986	1,837	2,058	2,334	2,473	2,653	2,886
Industry Employment Generated by Travel Spending (Jobs)								
Accom. & Food Serv.	24,210	26,420	24,890	26,650	27,820	29,140	30,400	31,700
Arts, Ent. & Rec.	8,250	8,810	8,200	8,680	9,210	9,450	9,660	9,650
Retail**	4,090	4,290	4,090	4,310	4,490	4,620	4,700	4,790
Ground Tran.	2,540	2,610	2,300	2,320	2,370	2,490	2,610	2,720
Visitor Air Tran.	5,670	6,050	5,160	5,320	5,820	5,910	5,950	6,290
Other Travel*	7,400	7,800	6,600	6,580	7,110	7,120	7,000	6,970
Total Employment	52,150	55,980	51,250	53,870	56,820	58,730	60,320	62,130
Government Revenue Generated by Travel Spending (\$Million)								
Local Tax Receipts	204	235	227	260	281	316	339	362
State Tax Receipts	137	148	141	156	168	182	191	201
Total Gov't Revenue	342	383	368	416	450	498	530	563

Details may not add to totals due to rounding.

*Other Travel includes resident air travel and travel agencies. **Retail includes gasoline.

DistrictThe Denver District includes Adams, Arapahoe, Boulder, Broomfield, Denver, Douglas and Jefferson counties.

El Paso/Teller District Overnight Travel Impacts, 2006-2016p

	2006	2008	2010	2012	2013	2014	2015	2016p
Total Direct Travel Spending (\$Million)								
Destination Spending	1,005	1,115	1,087	1,156	1,176	1,241	1,300	1,382
Other Travel*	124	129	109	112	94	94	90	96
Total Direct Spending	1,130	1,245	1,196	1,267	1,270	1,335	1,390	1,478
Visitor Spending by Type of Traveler Accommodation (\$Million)								
Hotel, Motel, Rented Room	668	766	740	788	811	874	936	1,013
Campground	39	36	35	36	35	34	36	36
Private Home (VFR)	273	287	285	304	302	304	299	303
Vacation Home	25	27	27	28	28	29	29	30
Destination Spending	1,005	1,115	1,087	1,156	1,176	1,241	1,300	1,382
Visitor Spending by Commodity Purchased (\$Million)								
Accommodations	202	223	209	221	230	252	290	330
Food Service	210	244	260	276	287	310	338	369
Food Stores	45	51	52	56	58	61	65	66
Local Tran. & Gas	98	123	96	117	114	112	82	75
Arts, Ent. & Rec.	166	174	178	195	205	216	223	231
Retail Sales	173	183	190	195	198	207	218	229
Visitor Air Tran.	112	116	101	95	84	83	83	82
Destination Spending	1,005	1,115	1,087	1,156	1,176	1,241	1,300	1,382
Industry Earnings Generated by Travel Spending (\$Million)								
Accom. & Food Serv.	140	162	161	181	190	201	222	235
Arts, Ent. & Rec.	66	76	71	77	79	83	91	95
Retail**	31	34	33	33	33	35	38	41
Ground Tran.	0	0	0	0	0	0	0	0
Visitor Air Tran.	10	10	10	10	9	9	9	10
Other Travel*	12	12	11	12	11	11	11	13
Total Earnings	258	293	287	312	323	338	371	394
Industry Employment Generated by Travel Spending (Jobs)								
Accom. & Food Serv.	7,290	7,790	7,450	8,130	8,520	8,750	9,250	9,620
Arts, Ent. & Rec.	3,410	3,800	3,470	3,710	3,750	3,890	3,970	4,180
Retail**	1,260	1,370	1,320	1,280	1,300	1,330	1,400	1,470
Ground Tran.	0	0	0	0	0	0	0	0
Visitor Air Tran.	220	220	180	170	170	160	160	160
Other Travel*	280	280	220	220	210	200	200	210
Total Employment	12,460	13,470	12,650	13,520	13,950	14,330	14,980	15,640
Government Revenue Generated by Travel Spending (\$Million)								
Local Tax Receipts	29	32	32	34	35	37	41	52
State Tax Receipts	28	30	30	31	32	33	36	39
Total Gov't Revenue	57	62	62	65	66	71	77	90

Details may not add to totals due to rounding.

*Other Travel includes resident air travel and travel agencies. **Retail includes gasoline.

The El Paso/Teller District includes El Paso and Teller counties.

Northeast District Overnight Travel Impacts, 2006-2016p

	2006	2008	2010	2012	2013	2014	2015	2016p
Total Direct Travel Spending (\$Million)								
Destination Spending	176	194	192	221	250	278	267	259
Other Travel*	2	1	1	1	1	1	1	1
Total Direct Spending	178	195	193	222	251	278	268	260
Visitor Spending by Type of Traveler Accommodation (\$Million)								
Hotel, Motel, Rented Room	58	65	60	78	105	131	119	106
Campground	7	7	7	7	7	7	7	7
Private Home (VFR)	105	114	119	128	130	133	135	139
Vacation Home	6	8	7	8	8	8	7	7
Destination Spending	176	194	192	221	250	278	267	259
Visitor Spending by Commodity Purchased (\$Million)								
Accommodations	22	25	23	28	37	47	44	38
Food Service	46	50	54	62	72	81	81	82
Food Stores	16	18	18	21	23	25	26	25
Local Tran. & Gas	22	28	22	27	28	28	21	19
Arts, Ent. & Rec.	26	28	29	31	34	36	36	37
Retail Sales	44	44	47	51	56	60	59	58
Visitor Air Tran.	0	0	0	0	0	0	0	0
Destination Spending	176	194	192	221	250	278	267	259
Industry Earnings Generated by Travel Spending (\$Million)								
Accom. & Food Serv.	25	29	28	31	36	41	44	46
Arts, Ent. & Rec.	14	16	14	16	16	18	19	20
Retail**	8	9	9	9	10	11	11	11
Ground Tran.	0	0	0	0	0	0	0	0
Visitor Air Tran.	0	0	0	0	0	0	0	0
Other Travel*	1	1	1	1	1	1	1	1
Total Earnings	48	54	51	57	63	70	75	77
Industry Employment Generated by Travel Spending (Jobs)								
Accom. & Food Serv.	1,800	1,820	1,690	1,800	2,040	2,220	2,290	2,350
Arts, Ent. & Rec.	1,130	1,250	1,090	1,180	1,170	1,250	1,250	1,230
Retail**	390	390	380	390	420	440	440	440
Ground Tran.	10	10	10	10	10	10	10	10
Visitor Air Tran.	0	0	0	0	0	0	0	0
Other Travel*	30	20	20	10	10	10	10	10
Total Employment	3,360	3,500	3,190	3,390	3,640	3,920	4,000	4,040
Government Revenue Generated by Travel Spending (\$Million)								
Local Tax Receipts	4	4	5	5	6	7	7	7
State Tax Receipts	5	6	6	6	7	8	8	8
Total Gov't Revenue	9	10	10	12	13	15	15	14

Details may not add to totals due to rounding.

*Other Travel includes resident air travel and travel agencies. **Retail includes gasoline.

The Northeast District includes Logan, Morgan, Phillips, Sedgwick, Washington, Weld and Yuma counties.

Southeast District Overnight Travel Impacts, 2006-2016p

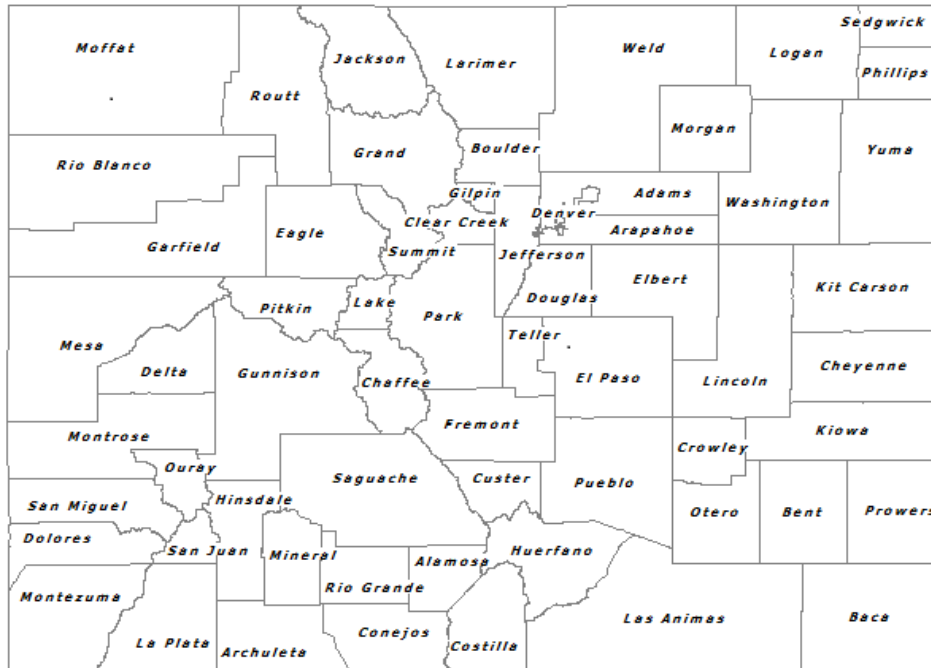
	2006	2008	2010	2012	2013	2014	2015	2016p
Total Direct Travel Spending (\$Million)								
Destination Spending	109	122	129	149	151	156	151	154
Other Travel*	20	20	8	8	13	13	15	13
Total Direct Spending	129	142	137	158	164	169	165	167
Visitor Spending by Type of Traveler Accommodation (\$Million)								
Hotel, Motel, Rented Room	36	44	50	66	65	67	61	62
Campground	5	4	4	5	4	4	4	4
Private Home (VFR)	60	63	65	69	72	74	74	77
Vacation Home	8	10	9	10	11	11	11	11
Destination Spending	109	122	129	149	151	156	151	154
Visitor Spending by Commodity Purchased (\$Million)								
Accommodations	13	16	18	22	21	22	22	23
Food Service	16	17	20	25	25	26	25	26
Food Stores	5	6	6	7	7	8	7	7
Local Tran. & Gas	52	59	58	65	68	70	68	69
Arts, Ent. & Rec.	9	10	11	12	12	12	12	12
Retail Sales	14	14	16	18	18	18	17	17
Visitor Air Tran.	0	0	0	0	0	0	0	0
Destination Spending	109	122	129	149	151	156	151	154
Industry Earnings Generated by Travel Spending (\$Million)								
Accom. & Food Serv.	12	14	15	15	15	15	15	16
Arts, Ent. & Rec.	4	5	6	6	6	6	6	6
Retail**	3	3	4	4	4	4	4	4
Ground Tran.	7	7	7	7	7	8	9	9
Visitor Air Tran.	0	0	0	0	0	0	0	0
Other Travel*	12	12	4	5	7	8	8	8
Total Earnings	38	41	36	37	39	41	43	44
Industry Employment Generated by Travel Spending (Jobs)								
Accom. & Food Serv.	780	830	860	800	770	780	780	790
Arts, Ent. & Rec.	360	360	410	440	420	400	390	380
Retail**	160	160	160	170	170	160	160	160
Ground Tran.	240	240	210	210	220	230	240	250
Visitor Air Tran.	0	0	0	0	0	0	0	0
Other Travel*	290	260	110	120	140	140	140	120
Total Employment	1,840	1,860	1,760	1,740	1,720	1,720	1,700	1,710
Government Revenue Generated by Travel Spending (\$Million)								
Local Tax Receipts	2	3	4	4	4	4	4	5
State Tax Receipts	4	4	4	4	5	5	5	5
Total Gov't Revenue	6	7	8	9	9	9	9	9

Details may not add to totals due to rounding.

*Other Travel includes resident air travel and travel agencies. **Retail includes gasoline.

The Southeast District includes Baca, Bent, Cheyenne, Crowley, Elbert, Kiowa, Kit Carson, Lincoln, Otero and Prowers counties.

V. COUNTY OVERNIGHT VISITOR IMPACTS 2000-2016p



County Overnight Travel Impacts, 2002-2016p

	2002	2004	2006	2008	2010	2012	2013	2014	2015	2016p
Adams										
Travel Spending (\$M)	219.6	262.3	318.4	342.6	299.0	347.5	382.6	419.6	420.8	429.0
Earnings (\$M)	60.1	67.4	77.9	80.5	73.7	82.3	94.2	101.0	110.0	120.1
Employment (jobs)	3,375	3,692	3,831	3,872	3,531	3,768	4,396	4,561	4,678	4,809
Local Taxes (\$M)	10.4	11.9	14.0	15.2	13.4	15.4	18.0	20.8	22.7	24.0
State Taxes (\$M)	9.2	10.4	11.9	12.1	11.1	11.9	12.9	14.0	14.6	15.1
Alamosa										
Travel Spending (\$M)	20.1	25.0	27.7	29.4	35.8	39.9	37.0	34.6	41.9	44.3
Earnings (\$M)	5.8	6.8	7.5	8.0	8.3	8.8	8.5	8.5	9.5	9.8
Employment (jobs)	431	459	483	462	466	476	457	441	462	490
Local Taxes (\$M)	0.7	0.8	0.8	0.9	1.2	1.3	1.2	1.1	1.4	1.8
State Taxes (\$M)	0.6	0.7	0.8	0.8	1.0	1.1	1.0	0.9	1.2	1.2
Arapahoe										
Travel Spending (\$M)	606.4	661.0	729.2	779.3	740.3	841.5	875.2	940.5	982.9	1,011.9
Earnings (\$M)	201.7	209.2	214.4	222.6	197.5	227.0	233.0	247.9	276.6	289.1
Employment (jobs)	6,360	6,203	6,052	6,457	5,902	6,386	6,557	6,854	7,174	7,261
Local Taxes (\$M)	13.7	15.5	18.0	20.3	19.3	22.2	23.6	26.5	29.4	30.7
State Taxes (\$M)	19.0	20.4	22.6	23.9	22.8	25.0	25.9	27.7	29.6	30.6
Archuleta										
Travel Spending (\$M)	29.6	34.2	37.8	36.8	40.6	45.9	47.2	52.8	54.8	59.9
Earnings (\$M)	12.0	13.9	14.8	14.6	13.7	14.4	15.6	16.9	18.7	20.4
Employment (jobs)	600	623	668	611	561	561	613	622	652	708
Local Taxes (\$M)	1.1	1.2	1.5	1.5	1.7	1.9	2.0	2.2	2.4	2.6
State Taxes (\$M)	0.9	1.0	1.1	1.1	1.2	1.3	1.3	1.5	1.6	1.7

County Overnight Travel Impacts, 2002-2016p

	2002	2004	2006	2008	2010	2012	2013	2014	2015	2016p
Baca										
Travel Spending (\$M)	1.8	2.3	3.0	3.2	3.1	3.1	3.0	3.1	3.1	3.0
Earnings (\$M)	0.4	0.5	0.7	0.7	0.5	0.5	0.5	0.6	0.7	0.6
Employment (jobs)	41	46	52	49	30	29	29	37	40	41
Local Taxes (\$M)	0.0	0.0	0.0	0.0	0.0	0.0	0.0	0.0	0.0	0.0
State Taxes (\$M)	0.1	0.1	0.1	0.1	0.1	0.1	0.1	0.1	0.1	0.1
Bent										
Travel Spending (\$M)	2.5	3.2	3.5	3.9	3.3	3.7	3.7	3.2	2.7	2.8
Earnings (\$M)	0.6	0.8	0.8	0.9	0.7	0.7	0.8	0.7	0.6	0.6
Employment (jobs)	53	62	66	66	47	45	45	38	36	40
Local Taxes (\$M)	0.1	0.1	0.1	0.1	0.1	0.1	0.1	0.1	0.1	0.1
State Taxes (\$M)	0.1	0.1	0.1	0.1	0.1	0.1	0.1	0.1	0.1	0.1
Boulder										
Travel Spending (\$M)	290.5	328.7	372.9	411.3	392.2	442.2	461.9	476.9	486.3	509.3
Earnings (\$M)	99.0	108.6	117.6	134.0	120.3	133.1	139.3	145.4	155.9	165.8
Employment (jobs)	4,752	5,105	5,235	5,428	5,026	5,228	5,300	5,340	5,422	5,528
Local Taxes (\$M)	9.9	10.9	14.1	15.7	15.4	19.2	20.4	21.4	22.7	25.7
State Taxes (\$M)	8.4	9.2	10.5	11.3	10.9	12.0	12.6	13.0	13.6	14.3
Broomfield										
Travel Spending (\$M)	40.0	65.1	73.6	78.5	84.6	100.8	101.2	107.4	110.8	114.7
Earnings (\$M)	13.5	21.7	24.1	26.8	23.4	25.3	26.3	27.2	29.1	30.5
Employment (jobs)	696	1,025	1,108	1,179	1,077	1,101	1,126	1,140	1,167	1,210
Local Taxes (\$M)	1.6	2.5	3.2	3.4	3.6	4.4	4.4	4.7	4.9	5.1
State Taxes (\$M)	1.0	1.7	1.9	2.1	2.1	2.5	2.5	2.7	2.8	2.9

County Overnight Travel Impacts, 2002-2016p

	2002	2004	2006	2008	2010	2012	2013	2014	2015	2016p
Chaffee										
Travel Spending (\$M)	47.3	50.6	50.7	56.5	56.6	71.0	75.3	82.6	82.4	92.7
Earnings (\$M)	15.5	16.2	16.0	18.2	17.6	19.5	21.0	22.2	24.3	26.8
Employment (jobs)	996	987	903	908	866	948	969	983	1,000	1,047
Local Taxes (\$M)	1.6	1.6	1.6	1.8	2.0	2.6	2.8	3.1	3.2	3.8
State Taxes (\$M)	1.4	1.5	1.5	1.7	1.7	2.0	2.1	2.3	2.4	2.7
Cheyenne										
Travel Spending (\$M)	0.7	1.0	1.5	1.7	1.6	1.8	1.8	1.8	1.6	1.6
Earnings (\$M)	0.2	0.2	0.3	0.3	0.6	0.4	0.4	0.4	0.4	0.5
Employment (jobs)	15	19	24	26	48	30	31	34	33	31
Local Taxes (\$M)	0.0	0.0	0.0	0.0	0.0	0.0	0.0	0.0	0.0	0.0
State Taxes (\$M)	0.0	0.0	0.1	0.1	0.1	0.1	0.1	0.1	0.1	0.1
Clear Creek										
Travel Spending (\$M)	18.6	19.9	22.2	23.3	21.5	25.1	26.2	26.4	27.5	31.0
Earnings (\$M)	4.7	4.8	5.1	5.3	5.5	6.3	7.2	7.6	8.6	9.6
Employment (jobs)	321	297	300	305	303	332	370	364	408	432
Local Taxes (\$M)	0.5	0.5	0.5	0.5	0.5	0.6	0.7	0.7	0.8	1.1
State Taxes (\$M)	0.6	0.6	0.7	0.7	0.7	0.7	0.8	0.8	0.9	1.0
Conejos										
Travel Spending (\$M)	5.6	5.9	7.3	7.5	7.6	8.2	8.1	8.1	7.4	8.5
Earnings (\$M)	2.0	2.1	2.5	2.5	2.1	2.2	2.1	2.2	2.2	2.5
Employment (jobs)	145	152	175	206	193	158	151	148	143	164
Local Taxes (\$M)	0.1	0.1	0.1	0.1	0.1	0.1	0.1	0.1	0.1	0.2
State Taxes (\$M)	0.2	0.2	0.2	0.2	0.2	0.2	0.2	0.2	0.2	0.3

County Overnight Travel Impacts, 2002-2016p

	2002	2004	2006	2008	2010	2012	2013	2014	2015	2016p
Costilla										
Travel Spending (\$M)	3.0	3.4	3.6	3.7	3.1	4.0	4.0	3.7	4.3	3.9
Earnings (\$M)	0.8	0.9	0.9	1.0	0.9	1.0	1.0	0.9	1.2	1.2
Employment (jobs)	81	82	80	83	76	90	83	80	101	95
Local Taxes (\$M)	0.1	0.1	0.1	0.1	0.1	0.1	0.1	0.1	0.1	0.1
State Taxes (\$M)	0.1	0.1	0.1	0.1	0.1	0.1	0.1	0.1	0.1	0.1
Crowley										
Travel Spending (\$M)	0.5	0.8	1.0	1.1	1.0	1.0	1.0	1.0	0.9	0.9
Earnings (\$M)	0.1	0.2	0.2	0.2	0.2	0.2	0.2	0.2	0.2	0.2
Employment (jobs)	8	12	12	13	13	12	12	12	12	12
Local Taxes (\$M)	0.0	0.0	0.0	0.0	0.0	0.0	0.0	0.0	0.0	0.0
State Taxes (\$M)	0.0	0.0	0.0	0.0	0.0	0.0	0.0	0.0	0.0	0.0
Custer										
Travel Spending (\$M)	8.1	8.3	8.5	9.5	9.2	9.6	10.0	10.8	10.7	11.2
Earnings (\$M)	2.0	2.0	2.0	2.3	1.9	1.7	1.6	1.7	1.8	2.0
Employment (jobs)	188	176	167	198	155	129	121	139	135	141
Local Taxes (\$M)	0.2	0.2	0.2	0.2	0.2	0.2	0.2	0.3	0.3	0.3
State Taxes (\$M)	0.2	0.2	0.2	0.3	0.2	0.2	0.2	0.3	0.3	0.3
Delta										
Travel Spending (\$M)	23.3	30.0	36.2	34.3	33.4	32.0	31.6	34.1	33.9	35.5
Earnings (\$M)	7.1	9.0	10.7	10.2	9.6	9.4	9.4	10.4	11.1	12.1
Employment (jobs)	482	574	654	563	564	519	525	544	589	614
Local Taxes (\$M)	0.7	0.9	1.1	1.0	0.9	0.9	0.9	0.9	1.0	1.0
State Taxes (\$M)	0.7	0.8	1.0	0.9	0.9	0.8	0.8	0.9	0.9	1.0

County Overnight Travel Impacts, 2002-2016p

	2002	2004	2006	2008	2010	2012	2013	2014	2015	2016p
Denver										
Travel Spending (\$M)	3,199.3	3,484.8	4,209.8	4,651.7	4,531.2	5,245.0	5,580.2	6,135.2	6,374.8	6,508.8
Earnings (\$M)	1,140.3	1,146.3	1,319.4	1,334.3	1,245.1	1,399.2	1,638.5	1,732.2	1,844.4	2,033.1
Employment (jobs)	25,292	26,697	28,801	31,151	28,335	29,814	31,483	32,531	33,279	34,572
Local Taxes (\$M)	93.7	101.8	137.6	160.3	156.4	177.3	190.5	216.1	230.8	246.7
State Taxes (\$M)	54.4	57.3	68.1	74.2	71.6	81.0	88.9	97.4	102.4	109.5
Dolores										
Travel Spending (\$M)	3.1	3.3	3.4	3.5	3.7	4.6	4.7	4.8	5.0	5.1
Earnings (\$M)	0.7	0.8	0.8	0.8	0.7	0.9	0.9	0.9	1.0	1.0
Employment (jobs)	77	79	78	66	54	56	58	54	59	62
Local Taxes (\$M)	0.1	0.1	0.1	0.1	0.1	0.1	0.1	0.1	0.1	0.1
State Taxes (\$M)	0.1	0.1	0.1	0.1	0.1	0.1	0.1	0.1	0.1	0.1
Douglas										
Travel Spending (\$M)	84.5	132.3	165.8	214.3	204.0	243.2	261.1	277.1	280.4	284.4
Earnings (\$M)	21.5	33.1	40.1	54.0	52.3	57.5	60.1	64.5	70.7	72.9
Employment (jobs)	1,093	1,626	1,959	2,495	2,451	2,569	2,636	2,709	2,813	2,838
Local Taxes (\$M)	2.0	3.0	4.0	5.6	5.8	7.1	8.0	8.6	8.9	9.3
State Taxes (\$M)	3.1	4.4	5.3	6.5	6.3	7.1	7.5	8.0	8.3	8.5
Eagle										
Travel Spending (\$M)	587.3	636.2	728.7	775.0	736.4	863.6	897.9	952.4	1,031.4	1,033.1
Earnings (\$M)	156.7	165.3	182.7	199.9	182.4	207.8	217.3	228.8	248.2	251.5
Employment (jobs)	6,355	6,387	6,581	6,836	6,307	6,866	6,901	7,056	7,385	7,542
Local Taxes (\$M)	23.8	23.1	26.8	29.1	27.5	32.9	34.7	37.1	41.2	45.1
State Taxes (\$M)	14.6	15.6	17.7	19.0	17.9	21.0	22.0	23.3	25.6	25.8

County Overnight Travel Impacts, 2002-2016p

	2002	2004	2006	2008	2010	2012	2013	2014	2015	2016p
El Paso										
Travel Spending (\$M)	810.1	956.7	1,027.2	1,138.5	1,086.2	1,138.3	1,131.6	1,189.1	1,243.2	1,330.1
Earnings (\$M)	180.7	209.0	221.8	253.0	246.8	268.0	278.9	293.2	322.4	344.1
Employment (jobs)	9,466	10,944	10,996	11,916	11,139	11,905	12,418	12,736	13,351	13,971
Local Taxes (\$M)	18.5	22.2	28.2	31.3	31.3	32.5	33.4	35.9	39.8	50.4
State Taxes (\$M)	21.4	24.6	26.1	28.5	28.0	29.1	29.8	31.5	33.9	36.4
Elbert										
Travel Spending (\$M)	57.7	60.4	63.8	67.2	57.3	61.8	69.0	72.5	75.9	77.2
Earnings (\$M)	19.3	19.4	19.2	19.7	12.4	12.7	15.4	16.5	18.0	17.8
Employment (jobs)	696	609	572	546	371	370	399	410	414	416
Local Taxes (\$M)	0.6	0.8	0.9	1.5	1.6	1.7	1.8	1.9	1.9	2.0
State Taxes (\$M)	1.3	1.3	1.5	1.6	1.5	1.5	1.7	1.8	1.8	1.9
Fremont										
Travel Spending (\$M)	40.6	46.5	55.1	57.1	55.4	57.6	58.8	58.7	64.2	65.6
Earnings (\$M)	11.4	12.6	14.6	15.4	15.0	14.9	14.0	14.1	16.3	16.6
Employment (jobs)	842	894	1,010	956	915	877	805	777	855	836
Local Taxes (\$M)	1.0	1.1	1.3	1.4	1.3	1.3	1.4	1.4	1.7	2.5
State Taxes (\$M)	1.3	1.4	1.7	1.7	1.7	1.7	1.7	1.7	1.9	1.9
Garfield										
Travel Spending (\$M)	85.6	97.0	125.5	145.0	121.2	143.9	144.1	157.1	163.2	168.2
Earnings (\$M)	26.8	29.5	36.8	43.5	36.1	38.9	40.9	45.2	49.0	52.2
Employment (jobs)	1,367	1,412	1,588	1,654	1,431	1,514	1,581	1,699	1,743	1,803
Local Taxes (\$M)	3.3	3.6	5.1	5.8	5.1	6.0	6.1	6.8	7.3	7.8
State Taxes (\$M)	2.9	3.2	4.0	4.4	3.8	4.3	4.3	4.7	5.0	5.2

County Overnight Travel Impacts, 2002-2016p

	2002	2004	2006	2008	2010	2012	2013	2014	2015	2016p
Gilpin										
Travel Spending (\$M)	140.6	133.1	129.1	121.0	109.5	124.3	132.3	133.6	132.9	132.7
Earnings (\$M)	50.3	45.7	45.3	45.9	50.6	49.2	47.3	48.2	51.9	53.3
Employment (jobs)	1,766	1,569	1,573	1,531	1,655	1,687	1,669	1,697	1,710	1,753
Local Taxes (\$M)	0.9	0.8	0.8	0.8	0.9	1.0	1.0	1.1	1.1	1.2
State Taxes (\$M)	1.7	1.6	1.6	1.5	1.6	1.6	1.6	1.7	1.7	1.8
Grand										
Travel Spending (\$M)	158.8	165.8	195.2	200.0	179.5	223.0	231.3	269.8	288.6	310.5
Earnings (\$M)	51.5	52.6	60.3	63.1	59.4	64.0	70.3	81.3	91.6	99.7
Employment (jobs)	2,621	2,402	2,556	2,564	2,367	2,543	2,661	2,928	3,091	3,272
Local Taxes (\$M)	5.6	5.7	6.6	6.7	5.9	7.4	7.8	9.2	11.4	13.6
State Taxes (\$M)	4.2	4.3	5.0	5.1	4.6	5.5	5.8	6.7	7.3	7.9
Gunnison										
Travel Spending (\$M)	83.2	120.3	138.5	136.4	136.2	149.9	156.5	174.6	182.4	195.8
Earnings (\$M)	22.2	34.4	38.2	39.4	35.0	38.0	39.8	47.4	52.1	56.1
Employment (jobs)	1,453	2,068	2,172	2,036	1,793	1,867	1,933	2,144	2,246	2,334
Local Taxes (\$M)	2.4	4.1	4.7	4.9	5.0	5.5	5.7	6.6	7.0	7.9
State Taxes (\$M)	1.8	2.7	3.1	3.1	3.0	3.3	3.5	4.0	4.2	4.6
Hinsdale										
Travel Spending (\$M)	9.5	9.5	10.5	10.1	10.5	11.5	11.4	14.3	11.9	13.8
Earnings (\$M)	5.3	5.2	5.6	5.5	5.2	7.6	6.9	8.5	7.5	8.8
Employment (jobs)	381	319	335	298	286	444	449	502	411	441
Local Taxes (\$M)	0.3	0.4	0.4	0.4	0.4	0.5	0.5	0.6	0.5	0.6
State Taxes (\$M)	0.3	0.3	0.3	0.3	0.3	0.3	0.3	0.4	0.3	0.4

County Overnight Travel Impacts, 2002-2016p

	2002	2004	2006	2008	2010	2012	2013	2014	2015	2016p
Huerfano										
Travel Spending (\$M)	8.1	8.8	9.6	11.9	11.4	12.5	12.4	12.0	13.0	12.7
Earnings (\$M)	2.9	2.9	3.0	3.8	3.2	3.0	3.0	2.7	3.0	3.2
Employment (jobs)	175	164	173	215	184	166	166	152	167	172
Local Taxes (\$M)	0.2	0.2	0.2	0.3	0.4	0.4	0.4	0.4	0.5	0.5
State Taxes (\$M)	0.3	0.3	0.3	0.4	0.4	0.4	0.4	0.4	0.4	0.4
Jackson										
Travel Spending (\$M)	3.2	3.1	3.4	3.8	3.9	4.1	4.6	6.0	5.4	7.8
Earnings (\$M)	2.0	1.9	2.1	2.3	2.3	2.4	2.7	3.1	3.0	4.3
Employment (jobs)	102	94	95	94	98	99	107	119	102	137
Local Taxes (\$M)	0.1	0.1	0.1	0.1	0.1	0.1	0.2	0.3	0.2	0.3
State Taxes (\$M)	0.1	0.1	0.1	0.1	0.1	0.1	0.1	0.2	0.1	0.2
Jefferson										
Travel Spending (\$M)	397.3	390.2	465.8	515.0	447.6	508.8	550.7	578.2	578.9	583.2
Earnings (\$M)	121.1	108.7	121.2	133.9	124.3	134.0	142.7	154.5	166.7	174.6
Employment (jobs)	5,788	4,978	5,168	5,397	4,927	5,007	5,321	5,593	5,785	5,912
Local Taxes (\$M)	12.6	10.3	13.5	14.6	12.9	14.6	16.5	18.1	19.7	20.2
State Taxes (\$M)	15.1	14.7	16.8	17.5	15.9	16.9	18.1	19.0	19.8	20.2
Kiowa										
Travel Spending (\$M)	0.7	0.8	0.9	0.9	0.8	0.9	1.0	1.0	1.0	1.0
Earnings (\$M)	0.2	0.3	0.3	0.3	0.3	0.3	0.3	0.3	0.3	0.3
Employment (jobs)	19	22	21	20	20	20	18	18	17	16
Local Taxes (\$M)	0.0	0.0	0.0	0.0	0.0	0.0	0.0	0.0	0.0	0.0
State Taxes (\$M)	0.0	0.0	0.0	0.0	0.0	0.0	0.0	0.0	0.0	0.0

County Overnight Travel Impacts, 2002-2016p

	2002	2004	2006	2008	2010	2012	2013	2014	2015	2016p
Kit Carson										
Travel Spending (\$M)	11.2	12.5	10.7	13.0	13.8	16.7	17.8	18.5	17.7	17.1
Earnings (\$M)	4.3	4.6	3.5	4.4	4.6	5.3	5.5	5.6	5.7	6.1
Employment (jobs)	261	261	189	215	216	244	244	244	244	250
Local Taxes (\$M)	0.2	0.2	0.2	0.3	0.3	0.4	0.4	0.5	0.5	0.4
State Taxes (\$M)	0.4	0.4	0.4	0.4	0.5	0.5	0.6	0.6	0.6	0.6
La Plata										
Travel Spending (\$M)	152.0	189.5	211.8	229.1	218.2	249.0	252.7	273.1	283.0	296.6
Earnings (\$M)	54.2	61.6	64.4	70.2	63.3	68.5	72.9	76.7	79.4	84.1
Employment (jobs)	2,742	2,947	2,906	2,838	2,594	2,746	2,827	2,906	2,937	3,054
Local Taxes (\$M)	4.5	5.3	6.2	6.6	6.3	7.0	7.2	7.8	8.2	9.2
State Taxes (\$M)	4.0	4.7	5.1	5.3	5.0	5.4	5.5	5.9	6.1	6.5
Lake										
Travel Spending (\$M)	21.8	21.9	25.1	28.8	27.4	30.5	29.1	29.5	29.9	34.4
Earnings (\$M)	7.2	7.0	7.9	9.5	8.3	8.8	8.7	9.4	9.8	10.8
Employment (jobs)	405	351	372	393	337	357	349	355	353	389
Local Taxes (\$M)	0.6	0.5	0.6	0.7	0.7	0.8	0.7	0.8	0.8	0.9
State Taxes (\$M)	0.6	0.6	0.7	0.8	0.8	0.8	0.8	0.8	0.8	1.0
Larimer										
Travel Spending (\$M)	310.4	365.3	436.7	448.7	432.6	515.3	536.9	595.9	621.6	611.5
Earnings (\$M)	88.2	100.9	118.2	124.5	125.5	142.5	151.4	164.2	179.6	184.3
Employment (jobs)	5,847	6,496	6,836	6,933	6,752	7,184	7,316	7,723	8,288	8,162
Local Taxes (\$M)	8.5	9.6	11.8	11.8	11.7	15.0	15.8	18.0	19.3	20.5
State Taxes (\$M)	9.1	10.3	12.3	12.4	12.2	14.1	14.8	16.4	17.4	17.3

County Overnight Travel Impacts, 2002-2016p

	2002	2004	2006	2008	2010	2012	2013	2014	2015	2016p
Las Animas										
Travel Spending (\$M)	15.2	17.9	27.7	35.8	33.4	35.2	36.1	35.9	35.4	35.4
Earnings (\$M)	5.6	6.3	9.6	12.9	11.8	11.0	11.3	11.0	11.8	12.6
Employment (jobs)	390	432	632	770	673	611	615	580	576	586
Local Taxes (\$M)	0.4	0.5	0.7	0.9	0.9	0.9	0.9	0.9	0.9	0.9
State Taxes (\$M)	0.5	0.6	0.9	1.1	1.0	1.0	1.1	1.1	1.1	1.1
Lincoln										
Travel Spending (\$M)	10.5	12.1	16.6	19.0	22.8	28.4	27.3	29.6	25.6	26.1
Earnings (\$M)	2.3	2.4	3.1	3.4	4.6	2.8	2.4	2.6	2.7	2.9
Employment (jobs)	181	171	209	213	270	153	124	132	130	131
Local Taxes (\$M)	0.2	0.2	0.3	0.3	0.6	0.7	0.7	0.8	0.7	0.8
State Taxes (\$M)	0.5	0.6	0.7	0.7	0.9	0.9	0.9	0.9	0.9	0.9
Logan										
Travel Spending (\$M)	17.2	18.6	20.5	21.7	21.7	24.3	26.3	30.9	28.4	23.1
Earnings (\$M)	5.7	6.0	6.3	6.9	6.4	6.7	7.8	8.9	9.1	8.0
Employment (jobs)	375	402	403	383	349	374	424	464	449	406
Local Taxes (\$M)	0.5	0.5	0.5	0.6	0.6	0.8	0.9	1.1	1.0	0.8
State Taxes (\$M)	0.5	0.6	0.6	0.6	0.6	0.7	0.8	0.9	0.8	0.7
Mesa										
Travel Spending (\$M)	133.2	180.4	223.8	272.8	240.0	266.5	269.1	275.2	281.0	282.3
Earnings (\$M)	39.1	43.9	53.0	64.7	57.2	57.8	60.8	63.9	67.7	70.3
Employment (jobs)	2,481	2,701	3,029	3,340	2,909	2,900	2,994	3,016	3,050	3,105
Local Taxes (\$M)	4.7	5.4	6.7	8.6	7.4	7.9	8.0	8.2	8.7	8.8
State Taxes (\$M)	4.0	4.5	5.5	6.4	5.6	5.9	6.0	6.1	6.4	6.5

County Overnight Travel Impacts, 2002-2016p

	2002	2004	2006	2008	2010	2012	2013	2014	2015	2016p
Mineral										
Travel Spending (\$M)	12.2	11.8	12.4	12.6	13.7	13.8	12.7	14.3	14.3	15.0
Earnings (\$M)	3.9	3.7	3.9	4.1	4.3	4.5	4.3	4.9	4.8	5.3
Employment (jobs)	317	288	286	290	296	294	268	303	309	314
Local Taxes (\$M)	0.4	0.4	0.4	0.4	0.5	0.5	0.4	0.5	0.5	0.5
State Taxes (\$M)	0.3	0.3	0.3	0.3	0.3	0.3	0.3	0.4	0.4	0.4
Moffat										
Travel Spending (\$M)	16.7	22.4	31.4	34.5	26.1	37.0	34.0	28.6	30.5	32.9
Earnings (\$M)	4.0	5.4	7.6	8.6	7.7	8.8	8.6	7.6	7.8	8.0
Employment (jobs)	347	439	582	595	499	534	520	455	475	472
Local Taxes (\$M)	0.5	0.7	1.0	1.1	0.8	1.2	1.1	0.9	1.0	1.1
State Taxes (\$M)	0.5	0.6	0.9	1.0	0.7	1.0	0.9	0.8	0.8	0.9
Montezuma										
Travel Spending (\$M)	54.2	62.9	72.4	75.8	70.0	77.0	84.4	85.0	86.8	87.7
Earnings (\$M)	13.3	14.9	17.1	18.3	17.0	17.7	18.9	19.3	20.4	21.3
Employment (jobs)	965	1,038	1,137	1,089	986	971	1,008	1,003	1,034	1,045
Local Taxes (\$M)	1.8	1.9	2.2	2.3	2.1	2.2	2.4	2.5	2.7	2.7
State Taxes (\$M)	1.5	1.7	2.0	2.0	1.9	2.0	2.2	2.3	2.4	2.4
Montrose										
Travel Spending (\$M)	59.9	76.8	91.9	98.9	103.1	103.8	109.9	115.4	122.3	127.7
Earnings (\$M)	14.6	16.4	18.8	20.0	18.2	18.2	19.2	19.9	21.5	23.4
Employment (jobs)	999	1,112	1,144	925	777	796	844	864	901	944
Local Taxes (\$M)	1.1	1.5	1.6	2.1	2.2	2.2	2.2	2.3	2.5	2.7
State Taxes (\$M)	1.7	1.9	2.2	2.3	2.4	2.3	2.4	2.5	2.6	2.7

County Overnight Travel Impacts, 2002-2016p

	2002	2004	2006	2008	2010	2012	2013	2014	2015	2016p
Morgan										
Travel Spending (\$M)	16.6	22.0	22.8	24.9	20.1	24.2	26.4	34.1	31.8	30.0
Earnings (\$M)	4.8	6.2	5.9	6.5	6.1	6.6	7.2	9.0	9.3	9.4
Employment (jobs)	381	494	453	482	451	460	479	560	569	555
Local Taxes (\$M)	0.4	0.5	0.5	0.5	0.4	0.5	0.6	0.9	0.9	0.8
State Taxes (\$M)	0.7	0.8	0.8	0.8	0.7	0.8	0.9	1.1	1.1	1.0
Otero										
Travel Spending (\$M)	10.7	14.2	15.0	16.9	18.0	19.5	19.8	20.2	18.2	18.2
Earnings (\$M)	3.2	4.1	4.1	4.8	4.9	4.7	4.9	5.0	5.0	5.1
Employment (jobs)	222	287	279	305	309	267	265	263	255	252
Local Taxes (\$M)	0.3	0.3	0.3	0.4	0.4	0.4	0.4	0.5	0.4	0.4
State Taxes (\$M)	0.4	0.4	0.5	0.5	0.5	0.6	0.6	0.6	0.5	0.5
Ouray										
Travel Spending (\$M)	20.9	22.1	22.1	27.8	28.3	32.3	33.3	33.8	37.9	42.7
Earnings (\$M)	7.6	8.0	7.7	10.0	8.8	9.4	9.9	10.4	11.2	12.7
Employment (jobs)	440	403	378	461	424	430	459	464	483	537
Local Taxes (\$M)	0.8	0.8	0.9	1.1	1.4	1.5	1.6	1.6	1.9	2.3
State Taxes (\$M)	0.6	0.7	0.7	0.8	0.8	0.9	0.9	1.0	1.1	1.2
Park										
Travel Spending (\$M)	14.9	15.7	17.6	19.6	19.8	21.6	21.9	23.7	23.8	24.3
Earnings (\$M)	5.8	5.9	6.4	7.2	6.1	6.1	6.0	6.6	7.0	7.2
Employment (jobs)	432	472	500	518	488	406	406	446	447	464
Local Taxes (\$M)	0.4	0.4	0.5	0.5	0.5	0.6	0.6	0.7	0.7	0.7
State Taxes (\$M)	0.4	0.5	0.5	0.6	0.6	0.6	0.6	0.6	0.7	0.7

County Overnight Travel Impacts, 2002-2016p

	2002	2004	2006	2008	2010	2012	2013	2014	2015	2016p
Phillips										
Travel Spending (\$M)	2.3	3.2	3.9	4.4	3.9	4.4	4.5	4.5	5.6	5.4
Earnings (\$M)	0.5	0.6	0.7	0.7	0.8	0.8	0.9	0.9	1.2	1.3
Employment (jobs)	47	60	60	59	52	53	54	56	73	72
Local Taxes (\$M)	0.0	0.0	0.0	0.0	0.0	0.0	0.0	0.0	0.1	0.1
State Taxes (\$M)	0.1	0.2	0.2	0.2	0.2	0.2	0.2	0.2	0.2	0.2
Pitkin										
Travel Spending (\$M)	392.0	428.6	517.7	552.7	586.6	584.9	619.5	667.9	713.9	703.0
Earnings (\$M)	139.2	149.5	176.6	193.6	193.4	206.9	225.9	239.5	259.4	261.5
Employment (jobs)	3,923	3,906	4,227	4,210	4,190	4,301	4,495	4,557	4,604	4,626
Local Taxes (\$M)	13.0	16.0	19.8	21.3	24.0	24.8	26.4	28.9	31.3	33.8
State Taxes (\$M)	9.2	10.0	12.1	13.0	13.6	13.6	14.5	15.7	16.9	16.7
Prowers										
Travel Spending (\$M)	12.2	13.5	13.2	14.8	15.1	20.9	19.2	18.2	18.2	19.2
Earnings (\$M)	5.3	5.8	5.6	6.6	7.0	9.2	8.5	8.5	8.9	9.4
Employment (jobs)	374	412	412	406	437	571	552	528	517	517
Local Taxes (\$M)	0.3	0.4	0.4	0.5	0.5	0.7	0.7	0.6	0.6	0.6
State Taxes (\$M)	0.3	0.3	0.3	0.4	0.4	0.5	0.5	0.5	0.5	0.5
Pueblo										
Travel Spending (\$M)	92.3	113.5	119.2	134.7	138.3	149.3	150.6	162.2	167.9	169.3
Earnings (\$M)	33.0	39.7	40.1	46.1	46.5	49.8	49.8	53.9	60.1	62.6
Employment (jobs)	1,852	2,076	2,007	2,057	1,990	1,994	2,016	2,057	2,145	2,283
Local Taxes (\$M)	3.0	3.4	3.5	4.0	4.3	4.5	4.5	5.1	5.6	5.8
State Taxes (\$M)	3.1	3.5	3.7	4.0	4.1	4.3	4.3	4.7	5.0	5.1

County Overnight Travel Impacts, 2002-2016p

	2002	2004	2006	2008	2010	2012	2013	2014	2015	2016p
Rio Blanco										
Travel Spending (\$M)	10.0	14.1	12.3	17.0	13.7	14.5	15.7	14.5	12.6	12.1
Earnings (\$M)	4.4	6.4	5.3	7.7	7.2	6.6	6.9	6.2	5.8	5.7
Employment (jobs)	203	284	213	261	220	225	230	207	183	189
Local Taxes (\$M)	0.3	0.4	0.3	0.5	0.4	0.4	0.4	0.4	0.4	0.3
State Taxes (\$M)	0.3	0.4	0.3	0.5	0.4	0.4	0.4	0.4	0.4	0.3
Rio Grande										
Travel Spending (\$M)	14.3	16.5	17.4	17.8	18.3	22.2	18.4	20.6	20.2	22.1
Earnings (\$M)	5.6	6.3	6.3	6.4	6.3	6.9	6.9	8.1	8.8	9.2
Employment (jobs)	401	453	408	399	361	368	395	465	460	496
Local Taxes (\$M)	0.6	0.6	0.6	0.6	0.7	0.8	0.7	0.8	0.8	0.9
State Taxes (\$M)	0.5	0.5	0.6	0.6	0.6	0.7	0.6	0.7	0.7	0.7
Routt										
Travel Spending (\$M)	234.6	249.9	296.6	322.7	273.2	294.8	316.3	342.6	357.2	387.2
Earnings (\$M)	93.3	95.8	110.9	124.2	119.7	134.2	140.4	153.1	165.7	178.5
Employment (jobs)	3,268	3,119	3,416	3,413	3,295	3,598	3,632	3,807	3,890	4,103
Local Taxes (\$M)	8.6	9.0	10.6	11.6	9.5	10.2	11.1	12.2	13.0	14.3
State Taxes (\$M)	5.7	5.9	7.0	7.6	6.6	7.1	7.6	8.3	8.8	9.6
Saguache										
Travel Spending (\$M)	4.2	4.9	5.3	5.6	6.0	6.8	6.9	8.0	7.7	8.9
Earnings (\$M)	1.1	1.3	1.4	1.5	1.7	1.7	1.8	2.2	2.2	2.5
Employment (jobs)	84	90	109	118	124	118	122	160	148	163
Local Taxes (\$M)	0.1	0.1	0.1	0.1	0.1	0.1	0.1	0.2	0.2	0.2
State Taxes (\$M)	0.1	0.1	0.1	0.2	0.2	0.2	0.2	0.2	0.2	0.2

County Overnight Travel Impacts, 2002-2016p

	2002	2004	2006	2008	2010	2012	2013	2014	2015	2016p
San Juan										
Travel Spending (\$M)	11.9	10.6	12.8	11.6	12.1	13.3	14.2	14.7	16.1	17.8
Earnings (\$M)	3.0	2.6	3.1	2.8	3.3	3.2	3.3	3.4	4.0	4.4
Employment (jobs)	199	168	200	170	162	165	167	160	183	187
Local Taxes (\$M)	0.3	0.3	0.4	0.3	0.4	0.4	0.5	0.5	0.6	0.7
State Taxes (\$M)	0.3	0.3	0.3	0.3	0.3	0.3	0.4	0.4	0.4	0.5
San Miguel										
Travel Spending (\$M)	106.2	113.0	121.6	135.3	123.0	141.9	171.2	180.9	205.8	229.3
Earnings (\$M)	36.2	36.0	38.4	44.4	46.2	54.4	60.9	64.8	74.5	81.9
Employment (jobs)	1,369	1,217	1,223	1,294	1,304	1,443	1,557	1,610	1,735	1,850
Local Taxes (\$M)	3.7	4.1	4.5	5.2	4.7	5.5	6.8	7.2	8.6	9.7
State Taxes (\$M)	2.7	2.7	3.0	3.4	3.2	3.7	4.4	4.7	5.4	6.1
Sedgwick										
Travel Spending (\$M)	1.1	1.6	1.8	2.0	1.9	2.1	2.1	2.1	2.0	2.0
Earnings (\$M)	0.3	0.4	0.4	0.4	0.3	0.3	0.3	0.3	0.3	0.3
Employment (jobs)	23	30	29	27	23	20	20	21	25	23
Local Taxes (\$M)	0.0	0.0	0.0	0.0	0.0	0.0	0.0	0.0	0.0	0.0
State Taxes (\$M)	0.0	0.1	0.1	0.1	0.1	0.1	0.1	0.1	0.1	0.1
Summit										
Travel Spending (\$M)	461.8	484.0	565.4	616.3	588.8	641.7	700.3	778.6	855.1	950.0
Earnings (\$M)	128.0	132.5	149.5	166.5	152.4	164.5	177.0	192.6	213.3	228.6
Employment (jobs)	6,298	6,184	6,376	6,360	6,134	6,604	6,811	7,128	7,481	7,719
Local Taxes (\$M)	17.3	17.9	21.3	24.2	23.1	26.1	28.9	32.4	36.2	41.6
State Taxes (\$M)	13.4	14.0	16.3	17.8	16.8	18.2	19.9	22.0	24.4	27.0

County Overnight Travel Impacts, 2002-2016p

	2002	2004	2006	2008	2010	2012	2013	2014	2015	2016p
Teller										
Travel Spending (\$M)	87.0	99.3	102.6	106.0	109.6	129.1	138.2	146.1	146.6	147.5
Earnings (\$M)	32.1	35.0	36.4	40.3	40.0	44.3	43.8	45.0	48.3	49.5
Employment (jobs)	1,422	1,441	1,467	1,552	1,516	1,617	1,530	1,594	1,628	1,670
Local Taxes (\$M)	0.6	0.7	0.8	0.8	0.9	1.0	1.0	1.1	1.1	1.3
State Taxes (\$M)	1.3	1.5	1.6	1.7	1.7	1.9	1.9	2.0	2.1	2.1
Washington										
Travel Spending (\$M)	1.7	2.4	2.6	2.6	2.6	2.7	2.7	2.8	2.8	2.8
Earnings (\$M)	0.5	0.7	0.7	0.7	0.5	0.5	0.6	0.6	0.6	0.6
Employment (jobs)	40	52	55	49	30	29	30	33	34	34
Local Taxes (\$M)	0.0	0.0	0.0	0.0	0.1	0.1	0.1	0.1	0.1	0.1
State Taxes (\$M)	0.0	0.1	0.1	0.1	0.1	0.1	0.1	0.1	0.1	0.1
Weld										
Travel Spending (\$M)	75.8	102.6	117.8	131.1	135.8	156.1	180.2	195.5	189.2	188.2
Earnings (\$M)	21.5	28.3	31.7	36.3	34.6	39.2	43.9	48.0	51.7	54.8
Employment (jobs)	1,612	1,975	2,173	2,334	2,116	2,282	2,464	2,616	2,683	2,768
Local Taxes (\$M)	1.7	2.2	2.7	3.0	3.2	3.7	4.5	5.0	4.9	4.8
State Taxes (\$M)	2.4	3.0	3.4	3.7	3.8	4.2	4.9	5.3	5.3	5.3
Yuma										
Travel Spending (\$M)	6.0	6.2	8.0	8.1	7.2	8.0	8.4	8.5	8.2	8.1
Earnings (\$M)	2.1	2.0	2.5	2.5	2.5	2.7	2.6	2.6	2.7	2.9
Employment (jobs)	176	169	186	163	171	168	172	170	168	178
Local Taxes (\$M)	0.1	0.1	0.1	0.1	0.1	0.1	0.1	0.1	0.1	0.1
State Taxes (\$M)	0.2	0.2	0.3	0.3	0.2	0.3	0.3	0.3	0.3	0.3

APPENDICES

Appendix A. Regional Travel Impact Model

Appendix B. Definition of Terms

Appendix C. NAICS Industries

Regional Travel Impact Model

This appendix provides a brief overview of methodology, terminology and limitations of the Regional Travel Impact Model.

Direct Impacts

The estimates of the direct impacts associated with traveler spending in Colorado were produced using the Regional Travel Impact Model (RTIM) developed by Dean Runyan Associates. The input data used to detail the economic impacts of the Colorado travel industry were gathered from various local, state and federal sources.

Travel impacts consist of estimates of travel spending and the employment, earnings and tax receipts generated by this spending. These estimates are also broken out by type of traveler accommodation and by the type of business in which the expenditures occur.

Types of Travel Impacts Included

Most of the travel that occurs in Colorado is included in the scope of this analysis. The purpose of such travel can be for business, pleasure, shopping, to attend meetings, or for personal, medical or educational purposes. All trips to Colorado by U.S. residents and foreign visitors are included. The travel of Colorado residents to other destinations within Colorado is included, provided that it is neither commuting nor other routine travel. Travel to non-Colorado destinations by Colorado residents is not included as a component of visitor spending. Outbound air travel impacts and spending on travel arrangement services are included in the "Other Travel" category.

The impacts associated with both overnight and day travel are included if the travelers remain at the destination overnight or the destination is over 50 miles, one-way, from the traveler's home. These definitions are used to screen and, if necessary, to interpret and adjust local data used for travel impact measurements.

Transportation Impacts

The focus of this analysis is on the destination-specific impacts of visitors. This is straightforward with respect to the spending on commodities such as accommodations, food services, recreation and retail purchases. It is less obvious with respect to ground and air transportation services, in that transportation provides a link between an origin and destination. In this report, the impacts related to spending on transportation are allocated to the location (i.e., county) in which those spending impacts occur, regardless of whether that location is the ultimate destination of the visitor. For this reason, urban counties will tend to have relatively greater transportation impacts even though some of that spending on transportation will be related to visits at other destinations.

Impact Categories

The specific categories of travel impacts included in this analysis are as follows:

Impact Category	Description
Expenditures	Purchases by travelers during their trip, including lodging taxes and other applicable local and state taxes, paid by the traveler at the point of sale.
Earnings	The earnings (wage and salary disbursements, earned benefits and proprietor income) of employees and owners of businesses that receive travel expenditures. Only the earnings attributable to travel expenditures are included; this typically is only a portion of all business receipts.
Employment	Employment associated with the above earnings; this includes both full- and part-time positions of wage and salary workers and proprietors.
Local Tax Receipts	Tax receipts collected by counties and municipalities, as levied on applicable travel-related purchases, including lodging, food and beverage service, retail goods and motor fuel taxes. The local share of the state sales tax is also included in this category. Property taxes are not included.
State Tax Receipts	The state share of the state sales tax, state lodging and motor fuel taxes, auto rental taxes, modified business taxes, entertainment taxes and gaming taxes are included in state tax receipts.

Visitor Categories

Travelers are classified according to the type of accommodation in which they stay. The types of visitors are as follows:

Type of Visitor	Description
Hotel, Motel, B&B	Travelers staying in hotels, motels, resorts, bed & breakfast establishments, and other commercial accommodations, excluding campgrounds, where a transient lodging tax is collected.
Campground	Travelers staying in a privately owned (i.e., commercial) or publicly managed campgrounds.
Private Home	Travelers staying as guests with friends or relatives.
Vacation Home	Travelers using their own vacation home or timeshare and those borrowing or renting a vacation home where a transient lodging tax is not collected.
Day Travel	Both in-state and out-of-state residents whose trip does not include an overnight stay at a destination in Colorado.

Reporting Format

A description of the headings and categories of the detailed direct impact tables is provided below.

- *Total Direct Travel Spending* includes the total visitor spending at destination, described above, plus spending on travel agencies and resident air travel (other spending). Total direct travel spending does not include secondary (indirect and induced) effects.
- *Visitor Spending by Type of Traveler Accommodation* refers to the total direct spending of each category of visitor at that destination (county or state). For example, the spending of visitors that stayed at hotels or motels includes their spending on accommodations, food & beverage service, recreation, transportation and all other visitor related commodities.
- *Visitor Spending by Commodity Purchased* refers to the total spending on each commodity for all types of visitors. For example, the total spending on Food & Beverage Services includes spending by visitors staying in hotels, private campgrounds, private homes and the other types of accommodation. The total spending on commodities is identical to the total spending by type of accommodation.

The next two sections, *Travel-Generated Earnings and Employment by Industry*, provide estimates of travel-generated earnings and employment that are based on an industry, rather than a commodity, classification. A business that is classified in a particular industry may include more than one commodity. For example, a resort that is classified in the accommodation industry may provide accommodations, food and beverages, and recreation.

- *Industry Earnings Generated by Travel Spending* includes the payroll, other earned benefits and proprietor income of all employees in that industry classification.
- *Industry Employment Generated by Travel Spending* includes all full- and part-time employees. This includes payroll employees covered by unemployment insurance and those that are not, as well as proprietors.

The final section provides an estimate of tax receipts generated by travel spending.

- *Tax Revenues Generated by Travel Spending* provides a breakout of local and state tax receipts. The specific taxes are listed on the preceding page.

Interpretation of Impact estimates

Users of this report should be aware of several issues regarding the interpretation of the impact estimates contained herein.

- The employment estimates in this report are estimates of the total number of full- and part-time jobs directly generated by travel spending, rather than the number of individuals employed. Both payroll jobs and self-employment are included in these estimates. Caution should therefore be used in comparing these estimates with other employment data series.
- In general, estimates of small geographic areas (e.g., rural counties) are less reliable than estimates for regions or metropolitan counties. Trend analysis and comparisons of counties with relatively low levels of travel-related economic activity should therefore be interpreted cautiously.
- The estimates of travel impacts published in this report will necessarily differ somewhat from estimates generated from different models, methodologies and data sources. Nonetheless, it should be emphasized that all credible estimates of direct travel impacts at the state level, including those of Dean Runyan Associates, are of similar magnitude.

DEFINITION OF TERMS

Accommodation: Spending for lodging by hotel and motel guests, campers and vacation home users.

Air Transportation: Air passenger spending attributable to travelers in and to Colorado. The spending total includes air travel spending made outside Colorado for travel to Colorado, purchases by Colorado residents who travel outside the state, and air travel within the state.

Campers: Travelers staying at RV parks and commercial campgrounds or at public campgrounds such as those in State or National Parks.

Day Visitor: A traveler whose trip does not include an overnight stay and who travels out of his/her local area (50+ miles one way).

Destination Spending: Spending by travelers at or near their destinations. This excludes spending on air transportation and for travel arrangement. All automobile operating expenses are included in the ground transportation component of destination spending.

Earnings: Total earnings include wage and salary disbursements, other earned benefits and proprietor income. Only the earnings attributable to travel expenditures are included.

Eating, Drinking: Businesses serving food and beverages for immediate consumption. In addition to table service restaurants, this category includes fast-food outlets and refreshment stands.

Employment: Industry employment (jobs) associated with the travel-generated payroll and proprietors. This includes both full- and part-time positions.

Expenditures: Purchases by travelers during their trip, including lodging taxes and other applicable local and state taxes paid by the traveler at the point of sale.

Food Stores: Grocery stores, supermarkets, fruit stands, retail bakeries, and other businesses selling food for consumption off the premises.

Ground Transport: Spending on car rentals, gasoline and other vehicle operating expenses, and on local transportation such as taxi, bus and train.

Hotel and Motel Guests: Travelers staying in hotels, motels, resorts, bed & breakfast establishments, condominiums, and other lodging places where the transient lodging tax is collected.

Local Tax Receipts: Tax revenue collected by counties and municipalities, as levied on applicable travel-related businesses (includes the transient lodging and local sales taxes).

Private Home Guests: Travelers staying as guests with friends or relatives.

Receipts: Travel expenditures less the sales and excise taxes imposed on those expenditures (also referred to as business receipts).

Recreation: Spending on amusement and recreation, such as admissions to tourist attractions.

Retail Sales: Spending for gifts, souvenirs and other items (excludes spending listed separately, such as food stores or recreation).

Spending Distributions: Information from visitor surveys showing how spending by each type of visitor is divided between various business categories.

State Tax Receipts: State sales taxes, personal and business income taxes, motor fuel taxes, and car rental taxes attributable to travel expenditures.

Transient Occupancy Tax: A local tax charged on lodging (also referred to as room tax, transient lodging tax, hotel tax or bed tax).

Travel: A day or overnight trip that is not of a local or commuting nature. Travel may be for business or pleasure purposes.

Travel Arrangement: Spending for fees paid to travel agents and tour operators.

Traveler: A person traveling in the state of Colorado. A traveler may be a Colorado resident or a resident of another state. The terms traveler and visitor have the same meaning in this report.

Vacation Home User: Travelers using their own vacation home or timeshare and those renting a vacation home or privately-owned cabin where transient occupancy tax is not collected.

TRAVEL IMPACT INDUSTRIES MATCHED TO 2007 NAICS

TRAVEL NAICS INDUSTRIES* (code)	Approximate Pct. Travel Employment
Accommodation & Food Services	
Accommodation (721)	80%
Food Services and Drinking Places (722)	20%
Residential Property Managers (531311)	
Arts, Entertainment & Recreation	40%
Performing Arts, Spectator Sports (711)	
Museums (712)	
Amusement, Gambling (713)	
Scenic and Sightseeing Transportation (487)	
Miscellaneous Industries (see note**)	
Retail	
Food & Beverage Stores (445)	5%
Gasoline Stations (447)	15%
Clothing and Clothing Accessories Stores (448)	5%
Sporting Goods, Hobby, Book, and Music Stores (451)	5%
General Merchandise Stores (452)	5%
Miscellaneous Store Retailers (453)	5%
Ground Transportation	
Interurban and rural bus transportation (4852)	
Taxi and Limousine Service (4853)	
Charter Bus Industry (4855)	
Passenger Car Rental (532111)	70%
Parking Lots and Garages (812930)	
Air Transportation	
Scheduled Air Passenger Transportation (481111)	70%
Support Activities for Air Transportation (4881)	
Travel Arrangement Services	
Travel Agencies (56151)	100%

Notes: *Government enterprises (e.g., park systems) are included in this classification.

**Includes parts of industries in other sectors (e.g., accommodation, charter bus).

A more detailed description of these industries can be found at <http://www.ntis.gov/na>